



XP[®] Family of Interior Products

National 
Gypsum[®]

Exclusive service provider of
Gold Bond Building Products, LLC



PURPLE

EVOLVE YOUR WALLS™

Whether you are designing a project or installing product in the field, PURPLE products from Gold Bond Building Products, LLC offer single-source solutions that provide the performance, support, and resources to get the job done right.

Our portfolio of PURPLE XP® paper-faced products deliver the confidence and peace of mind you need to stand behind your work. They are mold- and moisture-resistant, GREENGUARD certified for indoor air quality and manufactured in our signature PURPLE® color. So, be sure to ask for PURPLE and know you're building with the best.



MOLD & MOISTURE RESISTANT

Set the standard for mold-resistance and performance in high-moisture environments while working with lightweight, cost-efficient gypsum board.



ABUSE & IMPACT RESISTANT

Utilize XP products that offer superior impact resistance and surface durability along with other features like 100% recycled paper.



ACOUSTICAL

Reduce unwanted noise with the family of SoundBreak® XP® products. SoundBreak products deliver industry-leading noise reduction with innovative solutions for walls and ceilings.



GRIDMARX®

Our patented GridMarX® installation guide marks have proven to reduce material costs and increase efficiency on the job site.

GridMarX guide marks are printed on the face paper surface to help installers instantly identify stud locations and make accurate cuts without having to pencil in or snap chalk lines.



LOW-EMITTING MATERIALS

XP products have achieved GREENGUARD Gold Certification. GREENGUARD certified products are certified to GREENGUARD standards for low chemical emissions into indoor air during product usage. For more information, visit: ul.com/gg.

Qualifies as a low-emitting material per California Specification Section 01350 in accordance with CDPH Standard Method, v1.2. For more information, visit: calrecycle.ca.gov/

The Color of Confidence

XP Products Offer Solutions for Every Application

1 XP® HI-ABUSE® GYPSUM BOARD

- Protect against abuse and abrasion.
- Specially formulated core that adds an extra level of durability.
- Scratch and scuff resistant.

2 XP® HI-IMPACT® GYPSUM BOARD

- Walls subject to impact from hard objects.
- Resists penetrations through the gypsum board.
- Features fiberglass mesh embedded into its core.

3 XP® GYPSUM BOARD

- Extra protection against mold and mildew.
- Fights the effects of moisture before damage can occur.
- For use in all rooms.

4 SOUNDBREAK XP WALL® BOARD

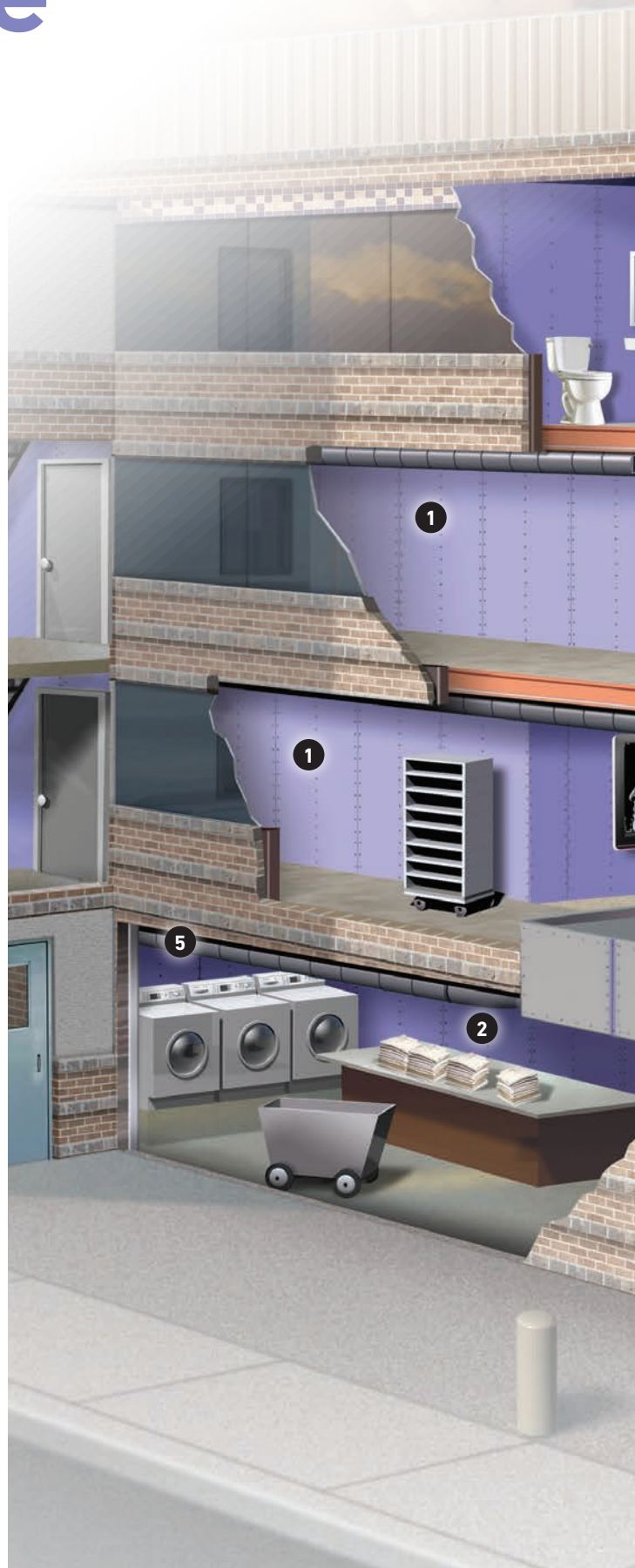
- Rooms requiring noise reduction.
- Dramatically reduce sound transmission between rooms.
- Superior sound damping, cost-efficient material that finishes easily and decorates in the same manner as standard gypsum board.
- Features GridMarX® guide marks on the board to allow for faster and more accurate installation.

5 SOUNDBREAK XP CEILING® BOARD

- Helps reduce floor-ceiling sound transfer.
- Features acoustically enhanced, fire-resistant gypsum core.
- Installs like traditional gypsum board.
- Mold and mildew resistance.

6 SOUNDBREAK XP RETROFIT® BOARD

- Noise reduction without the demolition.
- Improve the acoustical performance of an existing wall assembly.
- For speed of installation and lower installation costs, vertical board joints do not require acoustical sealant.



MEDICAL CENTER



5

3

6

3

4

2

2

1

XP[®] Hi-Abuse[®] Gypsum Board

Protects Against Abuse & Abrasion



This abuse-resistant gypsum board is ideal to use in wall assemblies where surface abrasion is a concern, such as corridors, entryways, lobby areas and warehouses. XP[®] Hi-Abuse[®] Gypsum Board has a mold- and moisture-resistant Type X gypsum core encased in heavy, abrasion and mold/mildew/moisture resistant, 100% recycled PURPLE[®] paper on the face side and heavy, abrasion and mold/mildew/moisture resistant, 100% recycled gray paper on the back side.

1. Heavy Abrasion/Mold- and Moisture-Resistant Face Paper
2. Enhanced Mold- and Moisture-Resistant Type X Core
3. Heavy Mold- and Moisture-Resistant Back Paper

ADVANTAGES

INHIBITS MOLD GROWTH

- Helps inhibit mold growth with the highest possible score on mold tests (ASTM D3273 and ASTM G21).
- Features SPORGARD[®] technology with extra mold-inhibiting properties.
- Has less than 5% water absorption per ASTM C473.

INSTALLS FAST AND EASY

- Weighs less and installs faster than a Concrete Masonry Unit (CMU).
- Finishes like regular drywall reducing the risk of improper installation.
- Scores and snaps easily.
- Features GridMarX guide marks on the board to allow for faster and more accurate installation.

RESISTS MOISTURE BETTER

- Fights the effects of moisture before damage can occur.
- Dimensionally stable product with negligible expansion and contraction under normal atmospheric conditions.
- Use as a tile backer board in dry areas or areas with limited water exposure, such as toilet and sink areas and wall and ceiling areas above tile in tubs and showers.

RESISTS ABUSE

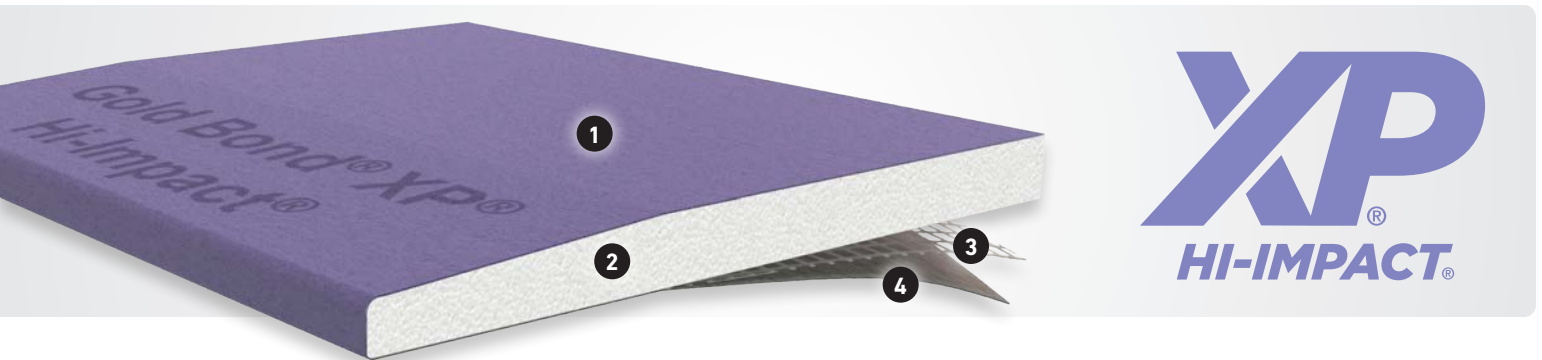
- Provides more protection against surface abrasion – stands up to scrapes, scratches and scuffs.
- Has a specially formulated core that adds an extra level of durability.
- Helps to prevent damage that adds maintenance costs and reduces safety.



For details about fire resistance, see technical data on page 14.

XP® Hi-Impact® Gypsum Board

Resists Impact



This impact-resistant gypsum board is designed for use in areas prone to cavity penetration, such as garages, gyms, correctional facilities, schools and hospitals. XP® Hi-Impact® offers the same mold-, moisture- and abuse-resistant features as XP® Hi-Abuse® Gypsum Board, with the addition of fiberglass mesh embedded into the core, providing even more impact/penetration resistance. It also has a specially formulated core to provide fire-resistance ratings. And you can use XP Hi-Impact as a tile backerboard in dry areas or areas with limited water exposure, such as toilet/sink areas and areas above tile in tubs and showers.

1. Heavy Abrasion/Mold- and Moisture-Resistant Face Paper
2. Enhanced Mold- and Moisture-Resistant Type X Core
3. Fiberglass Mesh Reinforcement
4. Heavy Mold- and Moisture-Resistant Back Paper

ADVANTAGES

INHIBITS MOLD GROWTH

- Helps inhibit mold growth with the highest possible score on mold tests (ASTM D3273 and ASTM G21).
- Features SPORGARD® technology with extra mold-inhibiting properties.
- Has less than 5% water absorption per ASTM C473.

INSTALLS FAST AND EASY

- Weighs less and installs faster than a Concrete Masonry Unit (CMU).
- Finishes like regular drywall reducing the risk of improper installation.
- Scores and snaps easily.
- Features GridMarX guide marks on the board to allow for faster and more accurate installation.

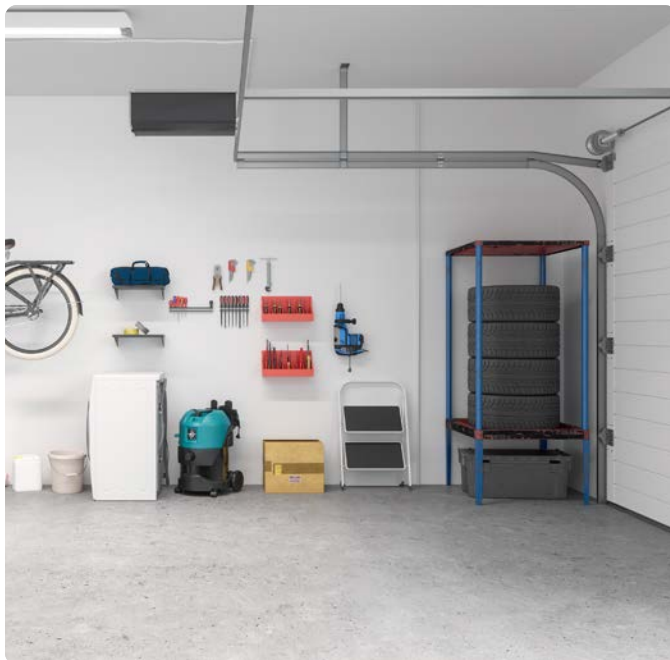
RESISTS MOISTURE BETTER

- Fights the effects of moisture before damage can occur.
- Dimensionally stable product with negligible expansion and contraction under normal atmospheric conditions.
- Use as a tile backer board in dry areas or areas with limited water exposure, such as toilet and sink areas and wall and ceiling areas above tile in tubs and showers.

IMPACT RESISTANCE

- Offers greater protection against impact that can lead to indentation.
- Features fiberglass mesh embedded into its core, one of the toughest components.
- Provides the highest level of durability for your walls or ceilings.
- Helps to prevent damage that adds maintenance costs and reduces safety.

For details about fire resistance, see technical data on page 14.



How Much Abuse and Impact Can XP Gypsum Board Take?

Do you need a gypsum board that can protect those high-traffic areas where interior damage is likely to occur? XP® Hi-Abuse® Gypsum Board, XP® Hi-Impact® Gypsum Board and SoundBreak XP Wall® Board are excellent choices and are tested in accordance with ASTM C1629, but there are differences between them.

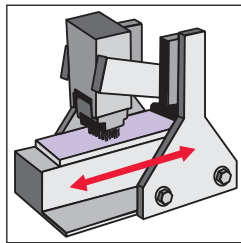
ABUSE AND IMPACT RESULTS

Product	ASTM D4977 Surface Abrasion Classification Level	ASTM D5420 Surface Indentation Classification Level	ASTM E695 Soft-Body Impact Classification Level	Annex A1 Hard-Body Impact Classification Level
XP® Hi-Abuse® Gypsum Board	3	1	2	1
XP® Hi-Impact® Gypsum Board	3	1	3	3
SoundBreak XP Wall® Board	3	1	2	1

Surface Abrasion

MODIFIED ASTM D4977

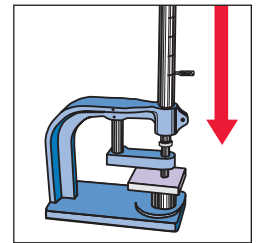
This test measures the ability of a gypsum panel surface to resist scratches and scuffs by subjecting the panel to 50 back and forth cycles with a wire brush. The depth of the abrasion is measured. The test was originally developed to test granule adhesion to mineral surfaced roofing and was modified by adding 25 pounds of additional weight to the wire brush.



Surface Indentation

ASTM D5420 - GARDNER IMPACT TEST

This test measures the ability of a gypsum panel to resist dents by a small hard object, by raising and dropping a hemispherical rod onto the gypsum panel. The depth of the indentation is measured. The original test was developed to test flat, rigid sheets of plastic.



Surface Abrasion Resistance Performance Requirements: ASTM D977

Classification Level	Abraded Depth Maximum
1	0.126" (3.2 mm)
2	0.059" (1.5 mm)
3	0.010" (0.3 mm)

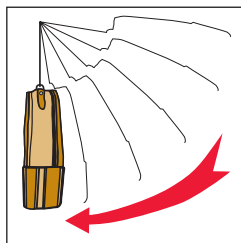
Indentation Resistance Performance Requirements: ASTM D5420

Classification Level	Indentation Maximum
1	0.150" (3.8 mm)
2	0.100" (2.5 mm)
3	0.050" (1.3 mm)

Single Drop Soft-Body Impact

MODIFIED ASTM E695

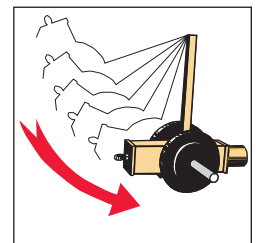
This test measures the ability of a gypsum panel to withstand a single impact of a heavy soft object. This test is conducted by swinging a leather bag loaded with steel pellets into the panel. When the panel breaks, the height of the drop and weight of the bag are used to calculate the foot-pound measurement required to break the panel. The test was originally developed to measure relative resistance of wall, floor, and roof construction to impact loading.



Hard-Body Impact

ANNEX A1

This test measures the ability of a gypsum panel to withstand the impact of a hard object such as a hammer or heel of a boot. A panel is impacted with 2-3/4" steel cylinder mounted to a ram. Weights are added to the ram and the panel is impacted one time. The maximum amount of impact force the panel can withstand without breaching the stud cavity is reported. This is a new test proposed by manufacturers of high performance panels.



Soft-Body Impact Test Performance Requirements: ASTM E695

Classification Level	Soft Body Minimum
1	90 ft.-lbs. (112 J)
2	195 ft.-lbs. (265 J)
3	300 ft.-lbs. (408 J)

Hard-Body Impact Test Performance Requirements: Annex A1

Classification Level	Hard Body Minimum
1	50 ft.-lbs. (68 J)
2	100 ft.-lbs. (136 J)
3	150 ft.-lbs. (204 J)

Tests witnessed by H.P. White Laboratory, Inc.

SoundBreak XP Wall® Board

Sound Control and Damping



Turn down the volume when you incorporate SoundBreak XP Wall® Board into your wall assemblies. Noise transmission will be dramatically reduced between rooms or dwelling units with this superior sound-damping gypsum board. This board features an acoustically enhanced, high-density gypsum core encased in heavy, abrasion and mold/mildew/moisture resistant, 100% recycled PURPLE® paper on both sides. Plus, SoundBreak XP Wall Board provides the same great mold-inhibiting qualities as XP® Gypsum Board.

1. Heavy Mold-, Mildew- and Moisture-Resistant Face Paper
2. Enhanced Mold-, Mildew- and Moisture-Resistant Type X Core
3. Viscoelastic Polymer

ADVANTAGES

REDUCES SOUND TRANSMISSION

- Has a layer of viscoelastic damping polymer sandwiched between two pieces of high-density, mold-resistant gypsum board.
- Provides high-rated Sound Class Transmission (STC) values per an independent third-party acoustical laboratory using ASTM E90 test procedures.



WORKS FOR INTERIOR PROJECTS

- Use in a single layer or as a component of multi-layer wall assemblies.
- Thinner than traditionally built high-STC wall partitions, increasing usable floor space.
- Available in 1/2" and 5/8" (5/8" features a fire-resistant Type X core and is UL Classified).
- Provides greater resistance to surface abuse and indentation than standard gypsum board (per ASTM C1629).

INSTALLS FAST AND EASY

- Installs like traditional gypsum board, without requiring additional clips and/or channels.
- Finishes and decorates as easily as standard gypsum board.
- Features GridMarX guide marks on the board to allow for faster and more accurate installation.

INHIBITS MOLD GROWTH

- Helps inhibit mold growth with the highest possible score on mold tests (ASTM D3273 and ASTM G21).
- Features SPORGARD® technology with extra mold-inhibiting properties.

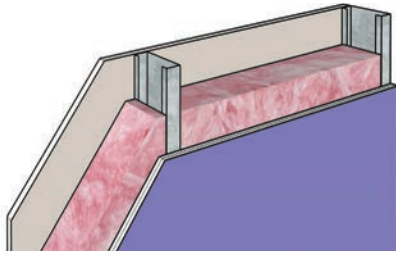
RESISTS MOISTURE BETTER

- Fights the effects of moisture before damage can occur.
- Dimensionally stable product with negligible expansion and contraction under normal atmospheric conditions.

For details about fire resistance, see technical data on page 14.

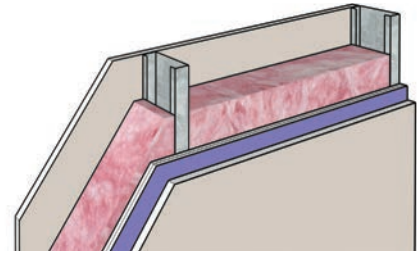
SoundBreak® XP® Acoustical Drawings

1-hour Fire Rating
V438, U465 UL Design
STC-55
OL14-0404



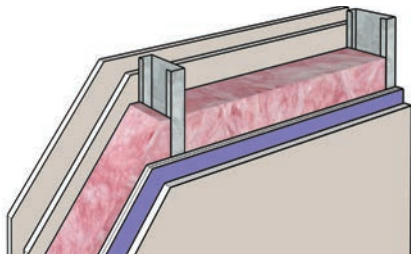
Framing: 3-5/8" steel studs, 20 gauge, 24" o.c.
Insulation: 3-1/2" glass fiber
Side 1: 5/8" Fire-Shield Gypsum Board
Side 2: 5/8" SoundBreak XP Wall Board

1-hour Fire Rating
V438, U465 UL Design
STC-57
RAL-TL06-334



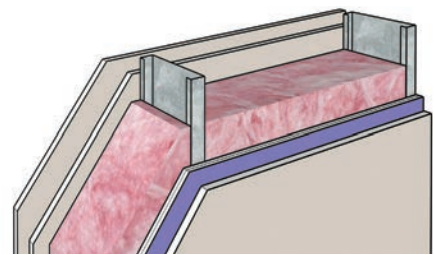
Framing: 3-5/8" steel studs, 25 gauge, 24" o.c.
Insulation: 3-1/2" glass fiber
Side 1: 5/8" Fire-Shield Gypsum Board
Side 2: 5/8" Fire-Shield Gypsum Board on 1/2" SoundBreak XP Wall Board

2-hour Fire Rating
V438, U411 UL Design
STC-60
RAL-TL07-168



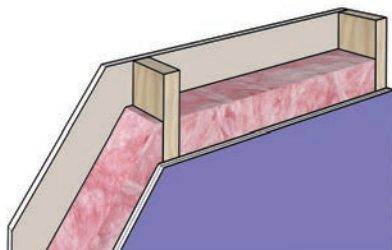
Framing: 3-5/8" steel studs, 25 gauge, 24" o.c.
Insulation: 3-1/2" glass fiber
Side 1: 2 layers 5/8" Fire-Shield Gypsum Board
Side 2: 5/8" Fire-Shield Gypsum Board on 5/8" SoundBreak XP Wall Board

2-hour Fire Rating
V438, U411 UL Design
STC-61
NRCC B-3456.2



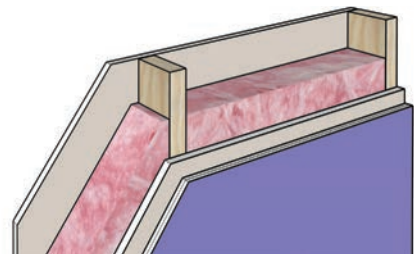
Framing: 6" steel studs, 25 gauge, 24" o.c.
Insulation: 6" glass fiber
Side 1: 2 layers 5/8" Fire-Shield Gypsum Board
Side 2: 5/8" Fire-Shield Gypsum Board on 5/8" SoundBreak XP Wall Board

1-hour Fire Rating
U309 UL Design
STC-50
NGC 2009015



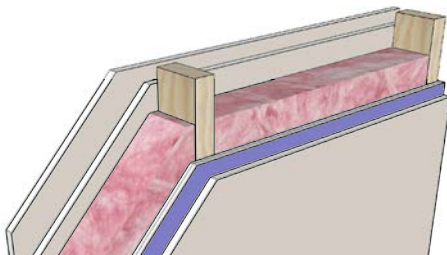
Framing: 2x4 wood studs, 24" o.c.
Insulation: 3-1/2" glass fiber
Side 1: 5/8" Fire-Shield Gypsum Board
Side 2: 5/8" SoundBreak XP Wall Board

Not Rated
STC-51
NGC 2009028



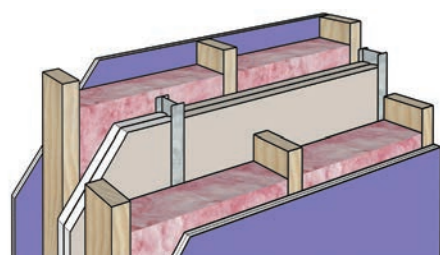
Framing: 2x4 wood studs, 24" o.c.
Insulation: 3-1/2" glass fiber
Side 1: 1/2" gypsum board
Side 2: 1/2" SoundBreak XP Wall Board on 1/2" gypsum board

2-hour Fire Rating
WP 4135 GA File
STC 54
NGC 2009016



Framing: 2x4 wood studs, 24" o.c.
Insulation: 3-1/2" glass fiber
Side 1: 2 layers 5/8" Fire-Shield Gypsum Board
Side 2: 5/8" Fire-Shield Gypsum Board on 5/8" SoundBreak XP Wall Board

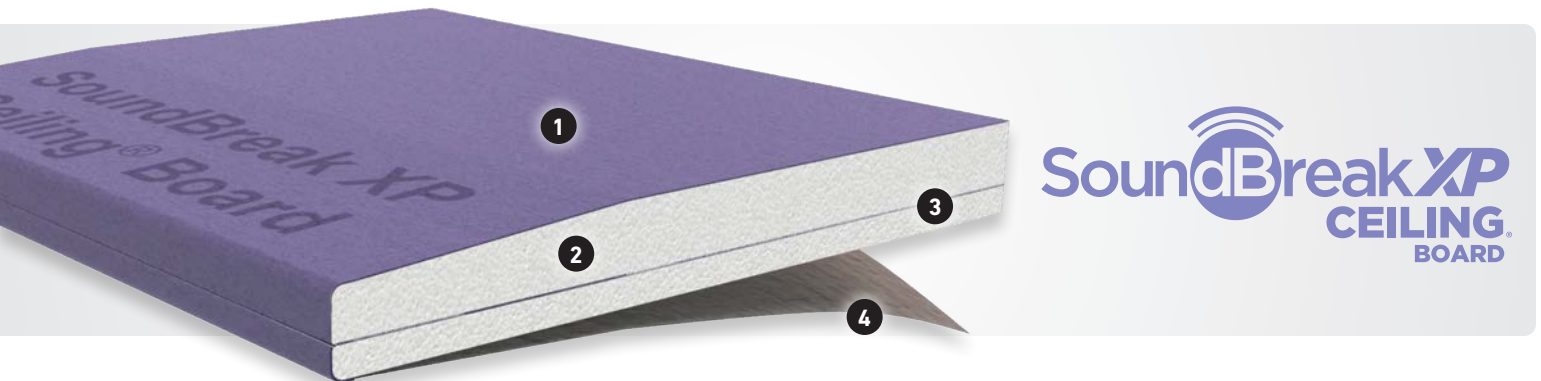
2-hour Fire Rating
V347 UL Design
STC 67
NRCC B-3451.1



Fire Wall: 2" H-studs, 24" o.c. with 2 layers 1" Fire-Shield Shaftliner between studs, 3/4" air space
Framing: 2x4 wood studs, 16" o.c. each side
Insulation: 3-1/2" glass fiber each side
Side 1: 5/8" SoundBreak XP Wall Board
Side 2: 5/8" SoundBreak XP Wall Board

SoundBreak XP Ceiling® Board

Helps Reduce Floor-Ceiling Noise Transfer



SoundBreak XP Ceiling® Board consists of two pieces of high-density, mold-, mildew- and moisture-resistant gypsum board, with a specially designed PURPLE® paper, laminated together with a sound-damping, viscoelastic polymer. This acoustically enhanced, fire-resistant gypsum core is encased in heavy paper that is 100% recycled on both sides and offers superior abrasion and mold-, mildew- and moisture resistance.

1. Heavy Mold-, Mildew- and Moisture-Resistant Face Paper
2. Enhanced High Density Mold-Resistant Type X Core
3. Viscoelastic Polymer
4. Heavy Mold-, Mildew- and Moisture-Resistant Face Paper

ADVANTAGES

REDUCES SOUND TRANSMISSION

- Provides high Sound Transmission Class (STC) and Impact Insulation Class (IIC) values per an independent third-party acoustical laboratory using ASTM E90 test procedures.
- In specific floor-ceiling assemblies, provides both STC and IIC ratings above 60.

WORKS FOR INTERIOR PROJECTS

- Heavy abrasion-resistant paper and dense core provide greater resistance to surface abuse and indentation when tested in accordance with ASTM C1629.
- Dimensionally stable product with negligible expansion and contraction under normal atmospheric conditions.
- Fire-resistant material will not support combustion or transmit temperatures greatly in excess of 212 °F (100 °C) until completely calcined, a slow process.

INSTALLS FAST AND EASY

- Features GridMarX guide marks on the board to allow for faster and more accurate installation.
- Installs like traditional gypsum board.
- Use according to specifications to achieve the highest possible sound ratings.

INHIBITS MOLD GROWTH

- Helps inhibit mold growth with the highest possible score on mold tests (ASTM D3273 and ASTM G21).
- Features SPORGARD® technology with extra mold-inhibiting properties.

RESISTS MOISTURE BETTER

- Fights the effects of moisture before damage can occur.
- Dimensionally stable product with negligible expansion and contraction under normal atmospheric conditions.



For details about fire resistance, see technical data on page 14.

SoundBreak XP Retrofit® Board

Noise Reduction Without the Demolition



SoundBreak XP Retrofit® Board consists of a high-density mold-, mildew- and moisture-resistant gypsum board with specially designed PURPLE® paper on the front and a sound-damping, viscoelastic polymer adhered to the back paper. This acoustically enhanced, fire-resistant gypsum board is encased in heavy paper that is 100% recycled on both sides and offers superior abrasion and mold-, mildew- and moisture-resistance.

1. Heavy Mold- and Moisture-Resistant Face Paper
2. Slightly Tapered Edge
3. Enhanced High Density Mold-Resistant Core
4. Viscoelastic Polymer

ADVANTAGES

REDUCES SOUND TRANSMISSION

- When installing over an existing interior wall assembly, SoundBreak XP Retrofit enhances Sound Transmission Class (STC) values per an independent third-party acoustical laboratory using ASTM E90 test procedures.
- Achieves increased STC values in a thinner wall assembly, increasing usable floor space.
- Superior sound damping, cost-efficient material that finishes easily and decorates in the same manner as standard gypsum board.

WORKS FOR INTERIOR PROJECTS

- Heavy abrasion-resistant paper and dense core provide greater resistance to surface abuse when tested in accordance with ASTM C1629.
- Fire-resistant material with a gypsum core will not support combustion or transmit temperatures greatly in excess of 212°F (100°C) until completely calcined, a slow process.
- Dimensionally stable product with negligible expansion and contraction under normal atmospheric conditions.

INSTALLS FAST AND EASY

- For speed of installation and lower installation costs, vertical board joints do not require acoustical sealant.
- Features GridMarX® guide marks on the board to allow for faster and more accurate installation.
- Easily scored and snapped to exact size without sawing.

INHIBITS MOLD GROWTH

- Helps inhibit mold growth with the highest possible score on mold tests (ASTM D3273 and ASTM G21).
- Features SPORGARD® technology with extra mold-inhibiting properties.

RESISTS MOISTURE BETTER

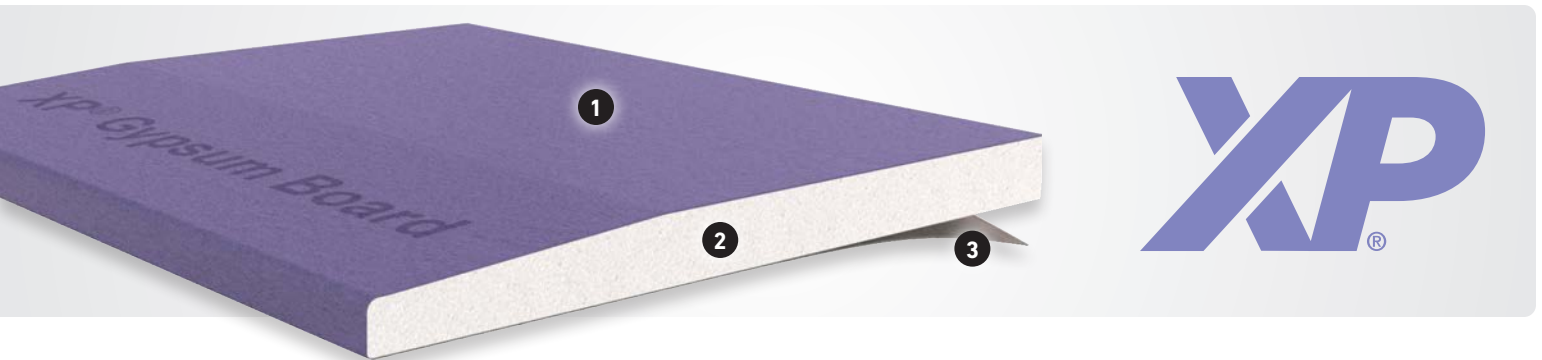
- Fights the effects of moisture before damage can occur.
- Dimensionally stable product with negligible expansion and contraction under normal atmospheric conditions.



For details about fire resistance, see technical data on page 14.

XP® Gypsum Board

Extra Protection Against Mold and Mildew



XP® Gypsum Board was designed to provide extra protection against mold and mildew compared to standard gypsum board products. The face paper is folded around the long edges to reinforce and protect the core, and the ends are square-cut and finished smooth. Long edges of the panels are tapered. 5/8" product is approved for use in protected exterior soffit applications.

1. Mold- and Moisture-Resistant Face Paper
2. Enhanced Mold- and Moisture Core
3. Heavy Mold- and Moisture-Resistant Face Paper

ADVANTAGES

WORKS FOR INTERIOR PROJECTS

- All wall and ceiling applications.
- As tile backerboard in dry areas.
- In areas with limited water exposure, such as toilet/sink areas and above tile in tubs and showers.

INHIBITS MOLD GROWTH

- Helps inhibit mold growth with the highest possible score on mold tests (ASTM D3273 and ASTM G21).
- Features SPORGARD® technology with extra mold-inhibiting properties.
- Has less than 5% water absorption per ASTM C473.

INSTALLS FAST AND EASY

- Scores and snaps easily, with no special handling requirements.
- Ends are square cut and finished smooth.
- Edges are tapered, allowing joints to be reinforced.
- Features GridMarX guide marks on the board to allow for faster and more accurate installation.

PROVIDES FIRE RESISTANCE

- UL Classified for fire resistance and surface burning characteristics.

RESISTS MOISTURE BETTER

- Fights the effects of moisture before damage can occur.
- Dimensionally stable product with negligible expansion and contraction under normal atmospheric conditions.



For details about fire resistance, see technical data on page 14.

Technical Data

Fire-Resistance Ratings

Fire-resistance ratings represent the results of tests on assemblies made up of specific materials in a specific configuration. When selecting construction designs to meet certain fire-resistance requirements, use caution to ensure that each component of the assembly is specified in the test. Further precautions should be taken to ensure that assembly procedures are in accordance with those of the tested assembly. For fire safety information, see goldbondbuilding.com. For copies of specific tests, call 1-800-NATIONAL®.

UL Core Designation

- **SBWB - 5/8" SB**
- **SBCB - 3/4" CB**

UL Listed Assemblies

The 5/8" SoundBreak XP Wall® Board is tested in accordance with ASTM Standard E119 and is classified as Type X for use in the following UL listings:

U017, U301, U302, U305, U309, U326, U330, U332, U338, U339, U341, U342, U351, U354, U355, U356, U357, U358, U360, U364, U368, U369, U371, U379, U392, U405, U411, U418, U420, U425, U428, U429, U434, U439, U449, U450, U460, U465, U466, U475, U487, U494, U499, U505, U524, U525, U531, U646, U647, U648, U649, U651, U652, U926, V408, V415, V419, V420, V421, V425, V430, V432, V433, V434, V435, V438, V449, V450, V486, V483, V484, V488, V497, W419, W437, W447, W450, W452, W469.

PHYSICAL PROPERTIES

Property Method	1/2" XP	5/8" XP	1/2" SoundBreak XP	5/8" SoundBreak XP	SoundBreak XP Ceiling	SoundBreak XP Retrofit	Hi-Abuse XP	Hi-Impact XP
Thickness, nominal	1/2" (12.7 mm)	5/8" (15.9 mm)	1/2" Regular (12.7 mm)	5/8" Type X (15.9 mm)	3/4" (19.1mm)	5/16" (7.9 mm)	5/8" Type X (15.9 mm)	5/8" Type X (15.9 mm)
Width, nominal	4' (1,219 mm)	4' (1,219 mm)	4' (1,219 mm)	4' (1,219 mm)	4' (1,219 mm)	4' (1,219 mm)	4' (1,219 mm)	4' (1,219 mm)
Length, standard	8'-12' (2,438-3,657 mm)	8'-12' (2,438-3,657 mm)	8'-12' (2,438-3,657 mm)	8'-12' (2,438-3,657 mm)	8'-10' (2,438-3,038mm)	8'-10' (2,438-3,038mm)	8'-12' (2,438-3,657 mm)	8'-12' (2,438-3,657 mm)
Weight, lbs/sq ft, nominal	1.5 – 1.6	2.2	2.3	2.7	2.9	1.3 – 1.4	2.8	2.8
Edges	Tapered or Square	Tapered	Slightly Tapered	Slightly Tapered	Slightly Tapered	Slightly Tapered	Tapered	Tapered
Surface Burning Characteristics*								
Flame spread:	0	15	15	15	15	15	15	15
Smoke developed:	0	0	0	0	0	0	0	0
Packaging**	34 pcs/unit	26 pcs/unit	34 pcs/unit	26 pcs/unit	24 pcs/unit	28 pcs/unit	26 pcs/unit	26 pcs/unit

*Per ASTM E84. **Special lengths may be available. Contact your local sales representative for more information.

MAXIMUM FRAMING SPACING

	Gypsum Board Thickness	Gypsum Board Orientation to Framing	Maximum Framing Spacing
Ceilings:	1/2" (12.7mm)	Parallel	16" (406mm) o.c.
	1/2" (12.7mm)	Perpendicular	24" (610 mm) o.c.
	5/8" (15.9 mm)	Parallel	16" (406mm) o.c.
	5/8" (15.9 mm)	Perpendicular	24" (610 mm) o.c.
Walls:	1/2" (12.7mm)	Perpendicular or Parallel	24" (610 mm) o.c.
	5/8" (15.9 mm)	Perpendicular or Parallel	24" (610 mm) o.c.

NOTE: On ceilings to receive hand or spray applied, water-based texture material, XP® Gypsum Board products shall be applied perpendicular to framing.

Please refer to product submittal on goldbondbuilding.com for Applicable Standards and References.



National Gypsum Company

National Gypsum Company is the exclusive service provider of reliable, high-performance building products manufactured by its affiliate companies and marketed under the Gold Bond®, ProForm®, and PermaBASE® brands. The strategic network of Gold Bond, ProForm, and PermaBASE manufacturing facilities located throughout major metropolitan hubs in North America allows us to provide the best in customer service so we can keep your fast-paced projects moving forward.

SUSTAINABILITY

Our brands create products that contribute to sustainable design by providing healthy indoor air quality; moisture, mold and mildew management; durability; optimal acoustics; life safety and increased space functionality. No matter how you define sustainability, we offer the most comprehensive set of value-added solutions in the industry.

TRUSTED PARTNER

The National Gypsum name has been synonymous with high-quality, innovative products and exceptional customer service since 1925. Our technical experts at 1-800-NATIONAL® are always a phone call away to answer any type of product or specification question.

We are Building Products for a Better Future® - one project at a time.

LIMITED WARRANTY AND REMEDIES

Products manufactured by Gold Bond Building Products, LLC ("Seller") are warranted by Seller to its customers to be free from defects in materials and workmanship at the time of shipment. Additional or different express limited warranties, limitations and exclusions may apply to specific Seller products.

Current warranty information on such products for both commercial and residential applications is available at goldbondbuilding.com. THIS EXPRESS WARRANTY IS THE ONLY WARRANTY APPLICABLE TO SUCH PRODUCTS, AND IS IN LIEU OF AND EXCLUDES ALL OTHER EXPRESS ORAL OR WRITTEN WARRANTIES AND ALL IMPLIED WARRANTIES, INCLUDING BUT NOT LIMITED TO THE IMPLIED WARRANTIES OF MERCHANTABILITY AND FITNESS FOR A PARTICULAR PURPOSE.

Seller will not be liable for any incidental, indirect or consequential losses, damages or expenses. The customer's exclusive remedy for any type of claim or action for defective products will be limited to the replacement of the products (in the form originally shipped) or, at Seller's option, to a payment or credit not greater than the original purchase price of the products.

Seller will not be liable for products claimed to be defective where the defect resulted from causes not within Sellers control, or which arose or occurred after shipment, including but not limited to accidents, misuse, mishandling, improper installation, contamination or adulteration by other materials or goods, or abnormal conditions of temperature, moisture, dirt or corrosive matter.

Any claim that products sold by Seller were defective or otherwise did not conform to the contract of sale is waived unless the customer submits it in writing to National Gypsum Services Company d/b/a National Gypsum Company, authorized sales agent and service provider to Seller, within thirty (30) days from the date the customer discovered or should have discovered the defect or non-conformance. No legal action or proceeding complaining of goods sold by Seller may be brought by the customer more than one year after the date the customer discovered or should have discovered the defect or problem of which it complains.

MOLD AND MILDEW RESISTANCE

XP products were designed to provide extra protection against mold and mildew. When tested by an independent laboratory, XP products received the highest possible ratings on ASTM G 21 and D 3273. The use of XP products in actual installations may not produce the same results as were achieved in controlled laboratory conditions.

No material can be considered "mold-proof," nor is it certain that any material will resist mold or mildew indefinitely. When used in conjunction with good design, handling and construction practices, XP products can provide increased mold resistance. As with any building material, avoiding water exposure during handling, storage and installation, and after installation is complete, is the best way to avoid the formation of mold or mildew.

Technical Information

Visit goldbondbuilding.com or call National Gypsum Company Construction Services: 1-800-NATIONAL (628-4662).

Technical Information Información Técnica

1-800-NATIONAL®

1-800-628-4662

National Gypsum Company is the exclusive service provider for products manufactured by Gold Bond Building Products, LLC. The Gold Bond family of products is manufactured by Gold Bond Building Products, LLC.

Customer Service

Atlantic Area

(800) 237-9167

atlantareacsrs@nationalgypsum.com

Central Area

(800) 252-1065

centralareacsrs@nationalgypsum.com

Gulf Area

(800) 343-4893

gulfareacsrs@nationalgypsum.com

Midwest Area

(800) 323-1447

midwestareacsrs@nationalgypsum.com

Northeast Area

(800) 253-3161

northeastareacsrs@nationalgypsum.com

Southeast Area

(800) 548-9394

southeastareacsrs@nationalgypsum.com

Southwest Area

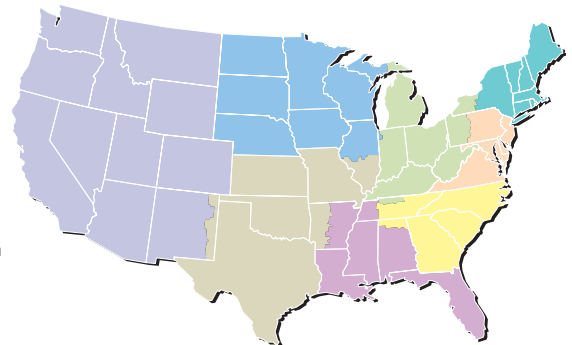
(800) 548-9396

southwestareacsrs@nationalgypsum.com

Western Area

(800) 824-4227

westernareacsrs@nationalgypsum.com



SPORGARD® is a registered trademark of LANXESS Deutschland GmbH, Germany.



Exclusive service provider of
Gold Bond Building Products, LLC

Gold Bond®
Building Products

Gold Bond Building Products, LLC
2001 Rexford Road
Charlotte, NC 28211

704.365.7300
goldbondbuilding.com