

High Performance Products



**L&W
SUPPLY**

lwsupply.com



Your single source for the products you need to get the job done on time, with accuracy and on budget.

At L&W Supply, we know that our customers are being challenged to take on more responsibility and risk. We work as an extension of your business to manage these challenges everyday. Our commitment to helping our customers manage through these challenges include:

- A portfolio of products that help you get the job done—the best way, more efficiently, the first time.
- A team of experts who have the knowledge and tools to connect our customers to the best tools for the job—from inquiry to invoice.
- Industry leading delivery and safety standards that assure you get our products safely, when and where you need them.

High Performance Products

This guide from L&W Supply features products & solutions designed to give your business an edge by helping you lower costs, drive efficiencies and increase productivity.

High Performance Products featured in this issue



ACCESSORIES

- CEMCO®
- CertainTeed
- Trim-Tex
- Wind-lock®

CEILING

- * F-Sorb
- Genuine Tin™
- USG

EXTERIORS

- EIFS
- Stucco
- Plaster

FASTENERS

- Grabber®

FLOORS

- USG

INSULATION

- Dow®
- Owens Corning®
- Roxul®

STEEL FRAMING

- ClarkDietrich®
- Marino\WARE®
- Simpson StrongTie®

TOOLS

- Grabber®

WALLS

- CertainTeed
- Continental Building Products
- Fabricmate®
- Marlite®
- National Gypsum
- QuietRock®
- USG

**L&W
SUPPLY**

**To learn more about these and other great products,
stop by your local L&W Supply branch today or
visit lwsupply.com**

CEMCO's 093X Fire Rated Control Joint

CEMCO's FAS-093X Fire Rated Control Joint is a single step composite control joint with factory applied intumescent tape. The FAS-093X has been tested per UL-2079 "Test for Fire Resistance of Building Joint Systems."

FAS-093X is a single step application that does not require drywall rips, fire sealant, or additional insulation to maintain the fire rating in 1 and 2-hour fire rated walls and is installed over the drywall. The FAS-093X comes in a steel profile and the FAS-093X-V comes in a vinyl profile.

The FAS-093X is used to relieve stresses of expansion and contraction of drywall interior partitions and can be used on metal or wood framing, on one or both sides of the wall. The opening is protected by removable orange plastic tape to keep the joint clean during construction and will also indicate the fire rating.

Contractors love the one step installation of the FAS-093X!

Features & Benefits

- **Saves Time** – When using FAS-093X, there is no need to install the extra drywall rips or fire sealant
- **Reliability** – 093X is a labor saving solution, that guarantees the fire rating will be maintained at control joints



Technical Information /Compliance Data

- **093X is tested per UL-2079 and listed under WW-D-0172**
- U.S. Patent 8,671,632

For more information, visit www.cemcosteel.com or contact your local L&W Supply branch for additional product information and availability.



CEMCO HOTROD Type-X (Compressible Firestopping)

CEMCO HOTROD Type-X is a compressible intumescent fire-stopping foam that provides 1 and 2 hour fire-ratings for both dynamic and static joints according to UL-2079 (for both standard walls and shaft walls) and is sound tested according to ASTM E90.

HOTROD takes the place of BOTH fire and sound sealant and will not shrink, pull away, or harden over time. The factory applied firestopping foam is compressed and installed into the head-of-wall deflection gap eliminating the requirement for fire or sound sealant all together.

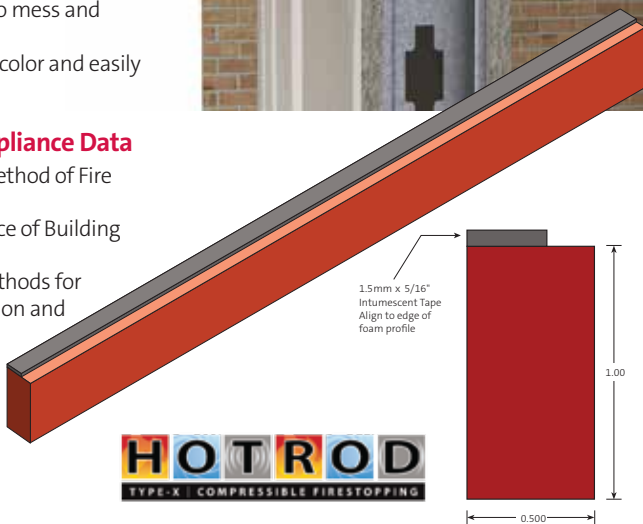
Features & Benefits

- **Saves Material** – HOTROD takes the place of fire and sound sealant
- **Long-Term Performance** – HOTROD has an unlimited shelf life and carries a sustainable life warranty
- **Clean & Fast Installation** – HOTROD installs 4X's faster than sealant, with no mess and no comeback work
- **Easy to See** – HOTROD is red in color and easily identified by inspectors



Technical Information/Compliance Data

- **ASTM E 1966:** Standard Test Method of Fire Tests of Firestop Systems
- **UL 2079:** Tests for Fire Resistance of Building Joints
- **ASTM E-119:** Standard Test Methods for Fire Tests of Building Construction and Material – Sound Tested in accordance with ASTM E90-09
- **Air leakage tests** conducted for compliance with Section 713.6 of IBC and CBC
- **UL listings/approvals:**
HW-D-0624; HW-D-0625;
HW-D-0554; HW-D-0550;
HW-D-0551; WW-D-0104;
BW-S-0024
- **Patent pending**



For more information, visit www.cemcosteel.com or contact your local L&W Supply branch for additional product information and availability.



CertainTeed Corners

CertainTeed's corners portfolio products are easy-to-apply, high performance, drywall corner solutions. CertainTeed corners are durable and reduce callbacks. They are ideal for both commercial and residential building applications.

No-Coat and AquaBead corners are manufactured with a tapered co-polymer plastic core that reduces the amount of mud needed to finish each corner. This design reduces dry times and helps keep you on schedule.

Features & Benefits

No-Coat®

- Mud applied, extra tough drywall corners that withstand severe impacts and settling
- Won't blister, bubble or edge crack
- Installs faster and delivers labor savings to your bottom line

AquaBead®

- Impact resistant
- Water-activated adhesive for easy application and bonding
- No nails, compound or spray glue required
- Easy to cut, won't crack, blister, bubble or rust

Levelline®

- Ideal for off-angle and short or long runs
- Quick, efficient corners in flexible and pre-cut stick profiles

CertainTeed offers a complete drywall corner system for all profiles and applications.



Visit www.certainteed.com or contact your local L&W Supply branch for additional product information and availability.

CertainTeed
SAINT-GOBAIN

Trim-Tex Drywall Products Super Seal Tear Away L Bead

Trim-Tex's Super Seal Tear Away L Bead contains a factory-applied gasket that compresses upon installation. The compressed gasket forms a permanent seal that reduces sound transmission, replaces caulk and provides structural relief at the panel perimeter.

The Super Seal Tear Away L Bead is designed to seal around windows, doors and where drywall butts up to a concrete wall.

Features & Benefits

- **Saves Time**

Features a tear off strip to keep finishing compound off other building substrates. The removed strip leaves a clean finished edge.

- **Less Material Needed**

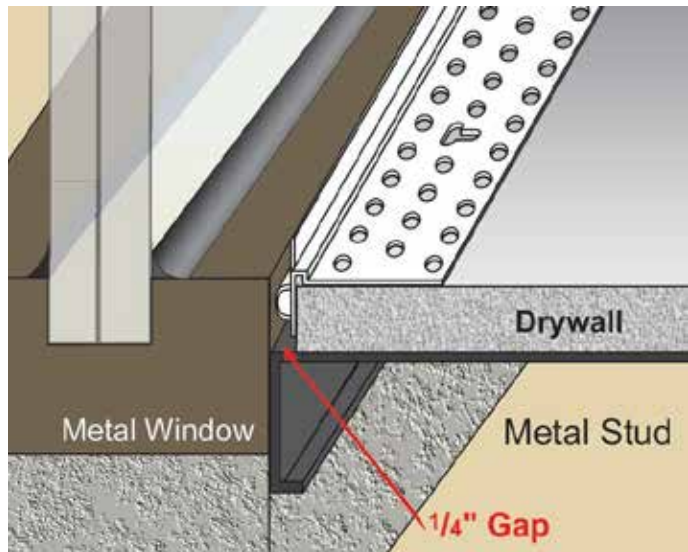
The factory-applied gasket replaces the need to apply caulk.

- **Durable**

Made from dent resistant PVC to reduce jobsite and handling damage.

- **Does Not Support Mold or Mildew**

Composed primarily of post-industrial plastics, this product does not support the growth of mold or mildew and will not rust.



Visit www.trim-tex.com or contact your local L&W Supply branch for additional product information and availability.

TRIM-TEX
DRYWALL PRODUCTS

Trim-Tex Drywall Products

Wall Mounted Deflection Bead

Trim-Tex's Wall Mounted Deflection Bead eliminates inside corner ceiling cracks due to building deflection. The compression and expansion of a flexible gasket maintains a clean finished head of wall detail during building movement.

The Wall Mounted Deflection Bead is designed for head of wall application where deflection will occur.

A co-extruded flexible gasket compresses and expands up to 7/16" to reduce the occurrence of cracks during deflection. This product is manufactured with a tear off strip to leave a clean finished edge after installation. The Wall Mounted Deflection Bead can be used in both fire-rated and non fire-rated assemblies. It is UL classified when installed with CEMCO® FAS® Track 1000.

Features & Benefits

- **Saves Time** – Features a tear off strip to keep finishing compound off other building substrates. Once removed, the tear off strip leaves a clean finished edge.
- **Long Term Performance** – Maintains excellent finished look for years to come.
- **Durable** – Made from dent resistant PVC to reduce jobsite and handling damage.
- **Does Not Support Mold or Mildew** – Composed primarily of post-industrial plastics, this product does not support the growth of mold or mildew and will not rust.

Compliance Data

- Meets ASTM D3678, D1784, C1047 specifications
- Achieves a Class A rating for flame spread and smoke developed when tested under ASTM E84
- UL classified when installed with CEMCO® FAS® Track 1000



Visit www.trim-tex.com or contact your local L&W Supply branch for additional product information and availability.

TRIM-TEX
DRYWALL PRODUCTS

WIND-LOCK® Stealth Access Panels

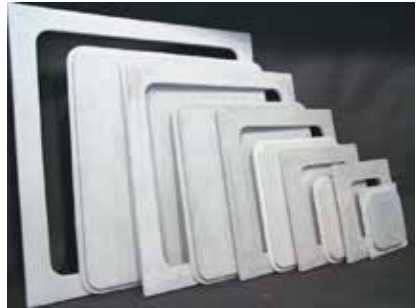
Stealth Access Panels by Wind-lock® are molded utilizing the latest glass fiber reinforced gypsum technologies. They are an incredibly attractive alternative to metal access panels, or fabricated access doors that are usually hidden in closets, or out-of-the-way areas.

Designed for both residential and commercial applications, they are used on new and retrofit construction. Blending seamlessly into drywall ceilings, Stealth Access Panels are the aesthetically-pleasing choice for projects where access is required at regular intervals and where the space is to be highlighted, not the access panels!



Features & Benefits

- Each unit consists of a surround frame, complete with pre-drilled fastener holes and a center drop-in door.
- Tapered edge for taping and blending into surrounding drywall.
- Panels will not shrink, or crack, are lightweight, paint ready and have smooth, round edges.



Why Stealth Access Panels by Wind-lock®?

Perfect for hospitality, retail, restaurants, multi-family and single-family homes, on both new construction and retrofit, Stealth Access Panels are the planet's #1 GFRG access panel, literally specified and installed on thousands of projects worldwide.

No more peeling paint, unsightly sagging metal, or rust with Stealth Access Panels. They are easily installed by a single trade (drywall contractors), while significantly reducing labor costs. Available in a variety of standard sizes, shapes and styles, including lockable hinged profiles, they can also be customized to satisfy virtually any required size.

For more information, visit www.wind-lock.com or contact your local L&W Supply branch for additional product information and availability.



F-Sorb® Acoustical Wall & Ceiling Panels

- Work well in either retrofit or new spaces.
- Install directly or suspended with no facing necessary.
- Have a wide variety of acoustical applications.
- Smooth textured and simple to install.
- Available in standard 4'x 8' panels.
- Made of 100% polyester and 65% minimum recycled content.
- Contain no VOC's, are formaldehyde free and hypoallergenic.
- Replace fiberglass with better acoustical and thermal performance.

The perfect balance of ease of use, affordability & acoustical performance

Applications

- Direct Applied
- Suspended
- Furred
- Screens
- Baffles
- Lay in Ceiling
- Tack Panels

Acoustical Absorption

Thickness 1/2" | NRC .50

Thickness 1" | NRC .70

Thickness 2" | NRC 1.05

Standard Colors

White, Tan, Grey,
Black Face on Grey
Inquire regarding
premium colors.

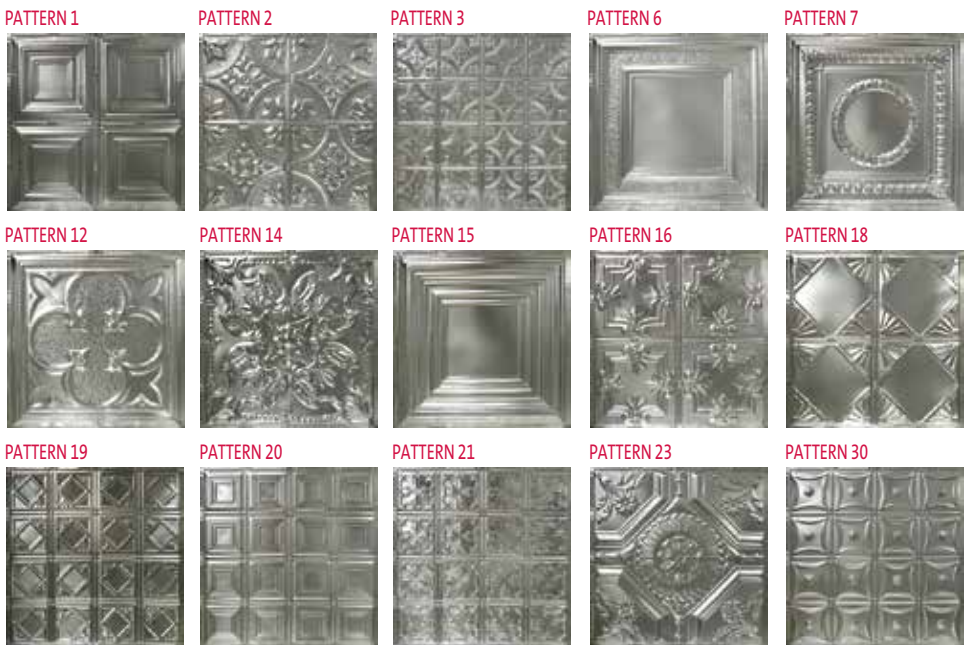


For more information, visit www.fsorb.com or contact your local L&W Supply branch for additional product information and availability.



GENUINE TIN™ Ceilings

Genuine Tin™ is a comprehensive line of tin panels for ceilings, walls and back splashes that offer the high-end aesthetics and classic look at a competitive price. Genuine Tin™ is proudly manufactured in the United States in a state-of-the-art stamping facility that can produce everything from authentic Victorian style designs to contemporary, modern adaptations. The products are available in Nail Up, SnapLock™, Drop-In and Drop-In Acoustical Panels.



Genuine Tin™ offers the most comprehensive line of tin ceilings on the market:

GENUINE TIN™	ARMSTRONG METALLAIRE	ARMSTRONG METALWORKS	CHICAGO METALLIC TRADITIONS®
Pattern 1	Medium Panels	Pattern 56007	7
Pattern 2	Large Floral Circle	Pattern 56006	26
Pattern 3	Small Floral Circle	Pattern 56001	3
Pattern 6	Hammered Border	Pattern 56008	N/A
Pattern 7	Wreath	Pattern 56004	0
Pattern 12	N/A	N/A	N/A
Pattern 14	N/A	N/A	N/A
Pattern 15	Large Panel	N/A	8
Pattern 16	Hammered Trefoil	Pattern 56003	1
Pattern 18	N/A	Pattern 6557	N/A
Pattern 19	Fans	Pattern 6554	5
Pattern 20	Small Panels	Pattern 56005	6
Pattern 21	Vine	Pattern 6550	2
Pattern 23	N/A	N/A	N/A
Pattern 30	N/A	Pattern 6551	21
F1 (Not shown)	Filler Panel	Pattern 56009	000

For more information, visit www.genuinetin.com or contact your local L&W Supply branch for additional product information and availability.

Genuine Tin™
Authentic Tin Panels for Ceilings, Walls & More

USG Ceilings Canopy Solutions

Take your design, performance and sustainability to a new level with the highest quality ceiling solutions!



USG Celebration™ Canopies

Specially engineered hardware for simple suspension

- Shipped pre-assembled, ready for easy & fast install
- Exceptional noise reduction with absorption from both the front and back of the panels.
- Integral return edge requires no finish trim
- Concealed suspension components with no visible hardware.
- Innovation connection options allow for grouped and ungrouped designs
- Unconstrained by a linked suspension system to allow freedom at assembly and alignment.

Applications All interior general-use areas

USG Halcyon™ Canopies

Ideal for providing both visual accents and acoustical control.

- Easy to install
- Exceptional noise reduction in a variety of designs, sizes and colors.
- ClimaPlus™ 30-year limited system warranty against visible sag, mold and mildew.

Applications Open-plenum areas, convention halls and concourses, reception and lobby areas, libraries, restaurants, retail, hospitality

PAINTED METALS				ANODIZED METALS		
Flat White 050	Silver Satin 002	Metallic Oyster 1652	Matte White 3708	Brushed Aluminum 058	Polished Chrome PM61	Satin Chrome PM614
WOOD TONES						
Beech 3467	Dark Bamboo 3465	Light Bamboo 3466	Dark Cherry 3468	Light Cherry 3469	Maple 3470	Red Oak 3471
Walnut 3472						

PREMIUM COLORS					
Dawn 3679	Old Stone 3691	Sea Shell 3678	Light Brown 3690	Nut Brown 3680	Peat 3682
Shale 3683	Ocean Ridge 3684	Atmosphere 3681	Laguna 3685	Grass 3688	Tangy Taleia 3689
Deep Cranberry 3687	Deep Violet 3686	Deep Berry 3693	Deep Blue 3692	Flat Black 205	
STANDARD COLOR			CUSTOM COLOR		
	Flat White 050			Unlimited Color Options	

© 2017 USG Corporation and/or its affiliates. All rights reserved. The trademarks USG, CELEBRATION, CLIMAPLUS, HALCYON, the USG logo, the design elements and colors, and related marks are trademarks of USG Corporation or its affiliates. For more information, visit ul.com/gg.

For more information, visit usg.com or contact your local L&W Supply branch for additional product information and availability.

USG
IT'S YOUR WORLD. BUILD IT.®

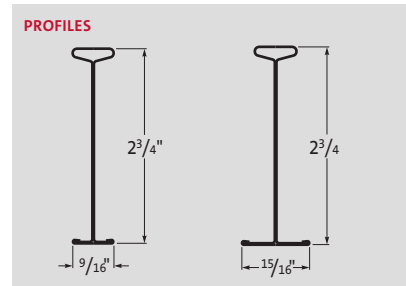
USG DONN® ADVANCESPAN™ DONN® DXAS™ and DXTAS™ Profiles

USG Donn® AdvanceSpan™ is a high-performance acoustical suspension system designed to span lengths of up to 8' without the use of hanger wires.

AdvanceSpan™ is ideal for corridors in healthcare and hospitality where plenum spaces are very crowded.

Features & Benefits

- Spans up to 8' with no hanger wires
- Single clip for easy screw attachment to wall molding.
- Ideal for healthcare, hospitality and multifamily applications with crowded plenum spaces
- Successfully tested for seismic category D-F installations
- DX - 15/16" and DXT - 9/16" face profiles available
- Compatible with all standard DX and DXT cross tees
- Available in 8'-6", 10'-6" and 12'-6" standard lengths



© 2017 USG Corporation and/or its affiliates. All rights reserved. The trademarks USG, DONN, ADVANCESPAN, DXAS, DXTAS, the USG logo, the design elements and colors, and related marks are trademarks of USG Corporation or its affiliates. For more information, visit ul.com/gg.

For more information, visit usg.com or contact your local L&W Supply branch for additional product information and availability.

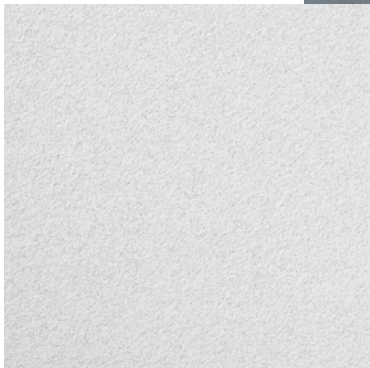


USG Mars™ High NRC Acoustical Panels

USG Mars™ High NRC Acoustical Panels, including Mars™ 90, offer the desired aesthetics and high-performance, balanced acoustics most projects need, but many can’t afford. Other products may offer you the ability to save money on a project, but they require significant aesthetic and performance sacrifices that may leave your customers dissatisfied.

Advantages of
USG Mars™ 90 vs. Fiberglass

- Less expensive than fiberglass
- No unsightly “yellow” to touch up
- Easier to work with – no itch
- Better sound isolation (CAC) performance than all comparably priced fiberglass tiles on the market



PRODUCT NAME	CORE	NRC	CAC	LR	LOW EMITTING	RECYCLED CONTENT	THICKNESS	MATERIAL COST
USG MARS™ HIGH NRC 90	MINERAL WOOL	.90	30	.90	STANDARD	66%	1"	\$\$\$
ARMSTRONG OPTIMA®*	FIBERGLASS	.95	0	.90	UP-	71%	1"	\$\$\$\$

CHARGE

With substantially better CAC, comparable NRC and identical LR, it’s a perfect substitute.

* Information based on manufacturer’s published information for Armstrong Optima® Tegular (Item# 3250).

© 2017 USG Corporation and/or its affiliates. All rights reserved. The trademarks USG, MARS, the USG logo, the design elements and colors, and related marks are trademarks of USG Corporation or its affiliates.

For more information, visit usg.com/ceilings or contact your local L&W Supply branch for additional product information and availability.



GRABBER® Vector™ Point Framing Screws

Grabber's Vector™ point screws drive considerably faster than competing fine thread screws for metal to metal framing and in drywall to metal attachment. Vector point screws start quicker and drive faster.

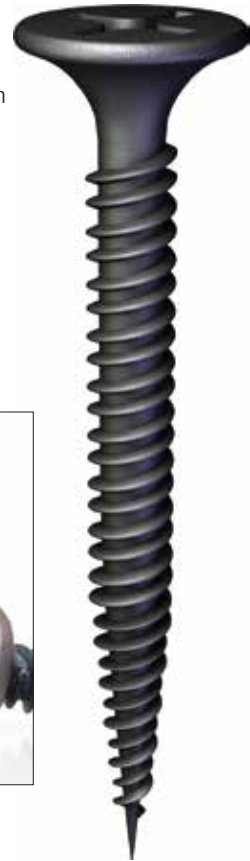
Vector™ point screws significantly reduce drive time and increase productivity with a considerably steeper-angle point compared to traditional fine thread screws. Competitive tests have demonstrated that Vector point screws drive up to eight times faster than IFI SAE J78 fastener penetration standards and 50% faster than competing fasteners in a drive comparison with standard light gauge metal fasteners.

Features & Benefits

- Pro-Fit™ recess for fewer cam-outs
- Super-sharp Vector™ point for faster starts and quicker penetration
- Steep-angle point drives up to 50% faster than traditional fine thread screws
- Available in pan head framing screws, lath head screws and bugle head drywall screws

Compliance Data

- ISO 9001 certified and approved
- Comply with ASTM C954, as referenced in ICC-ES report ER-5280



For more information, visit grabberman.com or contact your local L&W Supply branch for additional product information and availability.

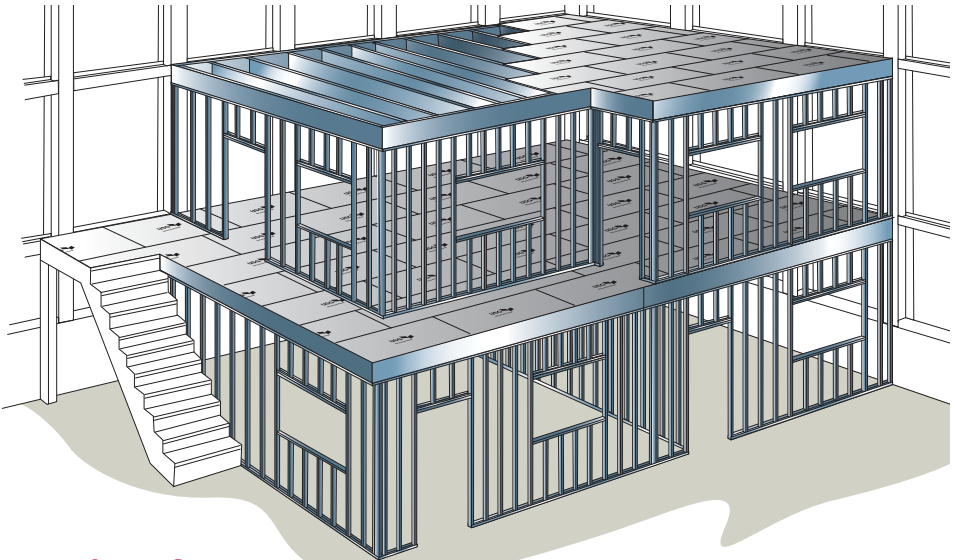


USG Structural Panels – Concrete Subfloor

- A faster and lighter alternative to poured concrete
- Three easy steps: lay, fasten, finish
- No pouring, no setting, no curing

From mezzanines to mid-rises, USG Structural Panels provide the attributes of concrete with the constructibility of wood sheathing. As the only noncombustible structural cementitious panels certified by Underwriters Laboratories, Inc. (UL), USG Structural Solutions meet stringent performance requirements, offer exceptional features and deliver superior strength.

USG Structural Panel Concrete Subfloor is a breakthrough in noncombustible construction. Lighter than precast and poured-in-place concrete, USG Structural Panel Concrete Subfloor's high strength enables you to build higher for less, while allowing for design flexibility and keeping projects on a fast pace to finish.



Features & Benefits

- Meets the criteria of ASTM E136-12 for use in all types of noncombustible construction
- Nonrotting
- Moisture-, mold- and termite-resistant
- Installs fast and easy: circular saw for cutting; screws for fastening
- Strong, durable concrete panel; great uplift ratings
- Dimensionally stable; panel will not buckle or warp like wood sheathing; no moisture issues like structural concrete
- The only noncombustible structural cementitious panel both manufactured and available in the United States

© 2017 USG Corporation and/or its affiliates. All rights reserved. The trademarks USG, the USG logo, the design elements and colors, and related marks are trademarks of USG Corporation or its affiliates.

For more information visit usg.com/structural or contact your local L&W Supply branch for additional product information and availability.



Owens Corning® ProPink® EcoTouch® FiberGlas™ Insulation

Owens Corning® EcoTouch® Insulation with PureFiber® Technology is flexible insulation made in R-values from 11 to 49. EcoTouch® Insulation is available unfaced, or faced with either a kraft or foil vapor retarder. The product is manufactured in thicknesses from 3-1/2" to 14".

Features & Benefits

- **Easy Installation** – EcoTouch® is ranked #1 for handleability and ease of installation by contractors and is preferred by 2 out of 3 professional installers over all other brands¹. Sized for installation in either wood or metal stud construction, EcoTouch® Insulation can either be friction-fit or stapled into place.
- **Fast Installation** – Installs up to 11% faster than other fiberglass insulation products¹. Trimming and fabrication can be done with an ordinary utility knife and is easily installed into odd shaped cavities and small spaces. EcoTouch® has excellent stiffness and recovery characteristics.
- **Less Dust** – Is easier to cut and split with less dust than other fiberglass insulation products¹.
- **Long Term Performance** – EcoTouch® Insulation has exceptional long term performance because it is dimensionally stable and will not slump in the wall cavity.
- **Convenient** – EcoTouch® Insulation is compression packaged in exclusive SpaceSaver packaging from Owens Corning Insulating Systems which reduces freight and speeds job site handling/installation.
- **Economical Thermal Performance** – With the range of R-values and thicknesses available, EcoTouch® Insulation can meet most thermal specifications with ease. The PRO-PINK® EcoTouch® R-30C and R-38C provide excellent thermal performance in the limited space of cathedral ceilings.
- **Effective Acoustical Control** – EcoTouch® Insulation enhances interior noise control by improving the Sound Transmission Class (STC) of walls and floor/ceiling assemblies.
- **Does not Support Mold** – PRO-PINK® EcoTouch® FIBERGLAS™ Insulation will not support mold and mildew growth² and is noncorrosive to steel, copper, and aluminum.
- **Contributes to Green Building** – Designed with the environment in mind, EcoTouch® Insulation includes a minimum of 50% total recycled content. EcoTouch® Insulation is GREENGUARD Gold Certified and is validated to be formaldehyde free³.



1. According to 2010 clinical trial conducted in Toronto, Canada by Ducker Worldwide on behalf of Owens Corning Insulation Systems, LLC.

2. As manufactured, FIBERGLAS(tm) insulation is resistant to mold growth. However, mold growth can occur on building materials, including insulation, when it becomes contaminated with organic material and when water is present. To avoid mold growth on FIBERGLAS(tm) insulation, remove any water that has accumulated and correct or repair the source of the water as soon as possible. Insulation that has become wet should be inspected for evidence of residual moisture and contamination, and any insulation that is contaminated should be promptly removed and replaced.

3. SCS Global Services provides independent verification of recycled content in building materials and verifies recycled content claims made by manufacturers. For more information, visit www.SCSglobalservices.com. GREENGUARD Certified products are certified to GREENGUARD standards for low chemical emissions into indoor air during product usage. For more information, visit ul.com/gg. For additional information on green building programs, visit: www.OCBuildingSpec.com

For more information, visit www.owenscorning.com or contact your local L&W Supply branch for additional product information and availability.



Owens Corning® SelectSound® Black Acoustic Blanket

SelectSound® Black acoustic blanket provides excellent acoustical performance for walls in multiplex theaters, sound studios and performing arts centers. SelectSound® Black acoustic blanket is also great for use above suspended metal ceiling systems. Depending on specified thickness, SelectSound® Black acoustic blanket absorbs up to 80% of the sound striking its surface.

SelectSound® Black acoustic blanket provides excellent acoustical performance for walls in multiplex theaters, sound studios and performing arts centers. SelectSound® Black acoustic blanket is also great for use above suspended metal ceiling systems. Depending on specified thickness, SelectSound® Black acoustic blanket absorbs up to 80% of the sound striking its surface.



Features & Benefits

- **Durable Material Composition** – SelectSound® Black acoustic blanket is dimensionally stable and will not shrink or warp. The blanket's resilient composition resists job-site damage.
- **Fast, High Quality Installation** – This wider product improves job site productivity and requires less seams. Lightweight and resilient, SelectSound® Black acoustic blanket is easy to handle, fabricate and install. Both stick pins and adhesives can be used to secure insulation to drywall, concrete block or precast concrete.
- **Understated Black Design with Effective Acoustical Control** – SelectSound® Black Acoustic Blanket has a durable black facing creates a neat, finished appearance.
- **Does not Support Mold or Mildew** – Composed of a mix of glass fibers, SelectSound® Black acoustic blanket does not support mold or mildew¹ and is noncorrosive to steel, copper and aluminum.
- **Standards and Code Compliant** – SelectSound® Black acoustic blanket complies with the property requirements of ASTM C 553, Type III, 250°F maximum use temperature.

1. As manufactured, FIBERGLAS™ insulation is resistant to mold growth. However, mold growth can occur on building materials, including insulation, when it becomes contaminated with organic material and when water is present. To avoid mold growth on FIBERGLAS™ insulation, remove any water that has accumulated and correct or repair the source of the water as soon as possible. Insulation that has become wet should be inspected for evidence of residual moisture and contamination, and any insulation that is contaminated should be promptly removed and replaced.



OWENS CORNING INSULATING SYSTEMS, LLC
One Owens Corning Parkway, Toledo, OH 43659
1-800-GET-PINK®
www.owenscorning.com
© 2017 Owens Corning. All Rights Reserved.

For more information, visit www.owenscorning.com or contact your local L&W Supply branch for additional product information and availability.

Owens Corning® FOAMULAR® Extruded Polystyrene (XPS) Commercial Insulation

FOAMULAR® XPS rigid foam insulation products are easy to use, resist water absorption, deliver high compressive strength, and maintain a high R-value throughout the life of the building.

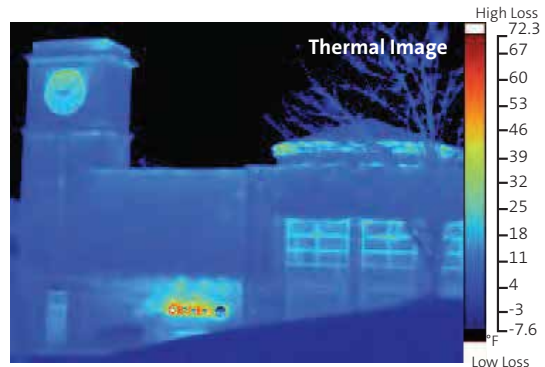
Supported by the Owens Corning team of building science experts, the complete line of FOAMULAR® XPS insulation products provide advanced commercial building solutions. From below grade and under slab to exterior walls and roof applications, FOAMULAR® insulation products deliver:

Features & Benefits

- **Long-Term Performance** – Long-term, stable thermal performance of R-5 per inch, measured after real-time aging. FOAMULAR® XPS insulation also has an industry-leading lifetime limited warranty¹.
- **Moisture Resistant** – Exceptional moisture resistance and R-value retention resulting in long-term durability.
- **Standards and Code Compliant** – ASTM C578 compliant compressive strength that ranges from 15 psi to 100 psi minimum.
- **Contributes to Green Building** – FOAMULAR® XPS insulation is the first XPS that is third party certified by SCS Global Services with a minimum 20% recycled content. It is the ONLY XPS to have achieved the GREENGUARD Gold Certification², with certification for occupants with sensitivities.
- **Reusable** – FOAMULAR® XPS insulation is reusable and remnants from manufacturing are recycled back into new XPS foam insulation.

1. For the life of the home or building. See actual warranty for complete details, limitations and requirements.

2. SCS Global Services provides independent verification of recycled content in building materials and verifies recycled content claims made by manufacturers. For more information, visit www.SCSglobalservices.com. GREENGUARD Certified products are certified to GREENGUARD standards for low chemical emissions into indoor air during product usage. For more information, visit ul.com/gg. For additional information on green building programs, visit www.OCBuildingSpec.com.



Continuous insulation reduces energy loss due to thermal bridging.



FOAMULAR®
Energy-Saving, Moisture-Resistant XPS Insulation

OWENS CORNING FOAM INSULATION, LLC
One Owens Corning Parkway, Toledo, OH 43659
1-800-GET-PINK®
www.owenscorning.com

The color PINK is a registered trademark of Owens Corning.
THE PINK PANTHER® & © 1964–2017 Metro-Goldwyn-Mayer Studios Inc. © 2017 Owens Corning. All Rights Reserved.

Visit www.owenscorning.com or contact your local L&W Supply branch for additional product information and availability.

Owens Corning® Thermafiber® RainBarrier® 45 Insulation and RainBarrier® HD Insulation

Thermafiber® RainBarrier® Continuous Insulation products provide exceptional performance in rain screen and cavity wall construction applications. Heavy density semi-rigid mineral wool boards provide thermal insulation, fire protection, and acoustical control while efficiently draining water from a wall cavity system. These products are non-combustible, non-deteriorating, inorganic, and compatible with common wall ties, adhesives, and air barrier systems. Thermafiber® RainBarrier® insulation products have an installed R-value of 4.3 per inch of thickness.

Thermafiber® RainBarrier® Insulation is an exterior continuous insulation that can be attached in a variety of different ways depending on the facade type. For installation information, please see the Thermafiber® RainBarrier® Insulation Installation Guide.

Features & Benefits

- **Non-Combustible and Fire Resistant** – Thermafiber® RainBarrier® withstands sustained temperatures above 2,000° F, in accordance with ASTM E119.
- **Contributes to Green Building** – Composed principally of recycled blast furnace slag from the steel industry, yielding a pre-consumer, minimum recycled content of 70%*. It contributes to credits in several green building programs such as LEED® and Green Globes®.
- **Permeable** – In a vapor permeable system, Thermafiber® RainBarrier® allows the building to breathe as it is designed without sacrificing R-value. This provides better control over humidity, condensation, and air quality. In a non-permeable system, the product allows the vapor barrier to perform without creating additional traps for moisture in the wall cavity.
- **UV Resistant and Saves Material** – It is great for use in open joint systems where UV rays can degrade other insulations. RainBarrier® 45 is a 4.5 pcf density board and unfaced. Thermafiber® RainBarrier® HD is a 6.0 pcf density board and unfaced. Both insulations are a natural, dark color providing camouflaging in open joint facades and eliminating the need for black facing.
- **Easy Installation** – It is semi-rigid and easy to cut, providing more flexibility and tighter joints during installation. It can conform to jobsite irregularities and fit well on curved walls or other surfaces much better than rigid insulations to ensure a continuous thermal barrier. Custom sizes are available per request.

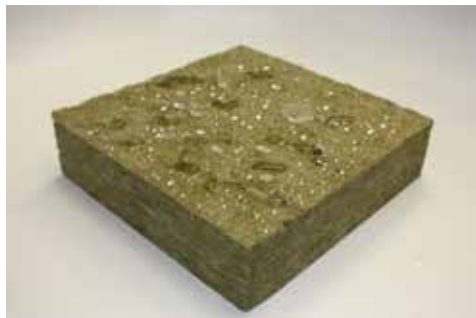
*Savings vary. Find out why in the seller's fact sheet on R-values. Higher R-values mean greater insulating power.

1. Recycled content verified by ICC-ES.

For additional information on green building programs, visit www.OCBuildingSpec.com.

LEED® is a registered trademark of U.S. Green Building Council.

Green Globes® is a registered trademark of Green Building Initiative, Inc.



THERMAFIBER, INC.
3711 Mill Street, Wabash, IN 46792
888-TFIBER1 [834-2371]
www.thermafiber.com
© 2017 Thermafiber, Inc. All Rights Reserved.

For more information, visit www.owenscorning.com or contact your local L&W Supply branch for additional product information and availability.

Owens Corning® Thermafiber® TopStop® Insulation

Thermafiber® TopStop® Head-of-Wall Insulation provides fire protection in head-of-wall constructions. These products are non-combustible, moisture-resistant, non-corrosive, non-deteriorating, mildew-proof, vermin-proof, and inorganic. Insulation used for Thermafiber® TopStop® insulation is UL and Intertek (formerly OPL) Classified, and is approved for use in designs that otherwise call for Thermafiber® Safing™ Insulation. It is available in 3 common sizes of trapezoidal shaped boards, as well as standard forming strips. Thermafiber® TopStop® insulation has an installed R-value of 4.2 per inch of thickness.

Thermafiber® TopStop® Insulation is designed to be used in head-of-wall designs that call for Thermafiber® Safing™ Insulation.

Features & Benefits

- **Stops Fire** – Thermafiber® TopStop® Insulation withstands sustained temperatures above 2,000° F, in accordance with ASTM E119.
- **Controls Sound** – Provides an effective acoustical barrier as well. It attenuates sound passage across the top of the wall.
- **Saves Time** – Uniform, pre-shaped Thermafiber® TopStop® boards eliminate field forming of insulation, while assuring a snug fit of material in the deck flutes. Worker productivity can increase with the reduction of job-site fabrication and the uncertainty of installing the correct amount of insulation.
- **Saves Material** – Reduces the waste produced by field cutting. The smooth edges reduce the amount of smoke sealant required to complete installation.
- **Contributes to Green Building** – Composed principally of recycled blast furnace slag from the steel industry, yielding a pre-consumer, minimum recycled content of 70%¹. This material will not promote fungal or bacterial growth, or contribute to corrosion of other materials. It contributes to credits in several green building programs such as LEED® and Green Globes®.
- **Sized to Fit** – There are three standard sizes to fit common fluted roof decks or slabs. Special sizes and densities are available upon special request.



1. Recycled content verified by ICC-ES.

For additional information on green building programs, visit www.OCBuildingSpec.com.

LEED® is a registered trademark of U.S. Green Building Council.

Green Globes® is a registered trademark of Green Building Initiative, Inc.



THERMAFIBER, INC.
3711 Mill Street, Wabash, IN 46992
888-TFIBER1 [834-2371]
www.thermafiber.com
© 2017 Thermafiber, Inc. All Rights Reserved.

For more information, visit www.owenscorning.com or contact your local L&W Supply branch for additional product information and availability.

ROXUL CAVITYROCK®

ROXUL CAVITYROCK® is a non-combustible, lightweight and water-repellent semi-rigid insulation. It is intended for use as an exterior insulation in cavity wall and rain screen applications. Its high permeability enables it to maintain its R-value and its mineral fiber structure allows for effective drainage of water which penetrates the exterior cladding.

For thicknesses of 1-2", it is made of a mono-density structure that maintains a consistent density throughout the product. For thicknesses 2.5" and greater, it utilizes dual-density technology to provide increased performance. The higher density outer layer provides a rigid outer surface for durability and enhanced strength, while the lower density inner layer allows for easier installation in the wall structure.



ROXUL CAVITYROCK® is used in the exterior cavity or rain screen applications as an exterior insulation. It provides thermal and fire resistance for the exterior building envelope. It works with a number of different cladding attachment systems to provide a thermally efficient exterior insulation layer. When designed appropriately, it can provide continuous insulation to meet building code requirements for continuous insulation.

When used with a batt product, such as ROXUL COMFORTBATT®, on the interior of the exterior wall it can provide a thermally efficient, fire resistant wall assembly that will provide comfort and safety.

Features & Benefits

- Fire Resistant up to 2150°F, does not trigger NFPA 285 testing
- Moisture Repellent
- Vapor Permeable, allowing vapor to diffuse through the system. It is compatible with vapor permeable weather resistive barriers.
- Does not promote growth of fungi or mildew
- Made from natural & recycled materials

Compliance Data

- ASTM C 612 Mineral Fiber Block and Board Thermal Insulation Type IVB, Complies
- ASTM E 136 Non-Combustible
- ASTM E 84 (UL 723) Flame Spread = 0
Smoke Developed = 0
- ASTM C 518 (C 177) R-value/inch @ 75°F 4.3 hr.ft².F/Btu
- ASTM C 1338 Zero Growth
- ASTM C 665 Corrosiveness to Steel Pass

For more information, visit www.roxul.com or contact your local L&W Supply branch for additional product information and availability.



DOW LIQUIDARMOR™ CM Flashing and Sealant

LIQUIDARMOR™ - CM Flashing and Sealant is an innovative liquid flashing alternative to conventional tape. It is designed to provide commercial buildings advanced moisture and air sealing protection and can reduce labor times during installation compared to hard-to-work-with and unforgiving tapes. LIQUIDARMOR™ is easy to use with common, commercially available tools and conventional spray techniques.

Features & Benefits

- Engineered to penetrate hard-to-reach gaps up to 1/4" wide
- Self seals around screws, veneer anchors and fasteners
- Non-hazardous, easy to handle and requires no respirator or extra ventilation
- Durable and withstands jobsite conditions
- Ideal for use with Dow XPS and Polysio where tapes have traditionally been used



LIQUIDARMOR™ -CM Flashing and Sealant Theoretical Yield

Application Width (inches)	Theoretical Yield/Pail at 50 mil wet (linear feet)
2	794
3	529
4	397
6	265
8	198

Note : Recommended typical LIQUIDARMOR™-CM Flashing and Sealant application thickness is 50 ±5 wet mil thickness. Refer to system installation guide for details.

For more information, visit building.dow.com or contact your local L&W Supply branch for additional product information and availability.



Quality. Service. Experience. **Delivered.**

At L&W Supply, we consider ourselves an extension of your business. **A trusted partner dedicated to helping your business grow.** We are committed to helping you do things right the first time. **We have the resources & tools to connect the best solution for the job.**

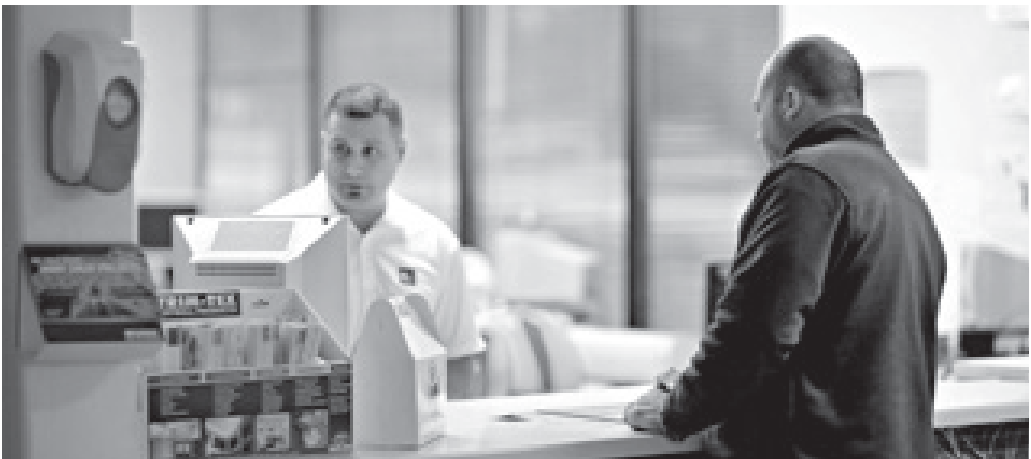
How do we do this?

Expansive Product Offering — We offer the broadest range of the best and most innovative products available today.

Our Resource Network — L&W Supply has the expertise and the tools to connect our customers to the best solutions for a job—from inquiry to invoice.

Expert Delivery Process — Our customers can be assured that we will deliver their products safely & exactly where & when they need them.

Learn more at lwsupply.com





**L&W
SUPPLY**



MARINO\WARE® StudRite® Steel Framing

StudRite® is an innovative steel framing product from Marino\WARE® that has specially-designed triangular shaped knockouts along the length of the stud providing a number of unique benefits to the contractor. The large and frequent knockouts make the stud lighter in weight compared to typical conventional studs, which translates into more production without compromising limiting heights or performance. The lip-reinforced holes make it easy to handle and faster for trades to install plumbing and wiring.

Features & Benefits

- **StudRite®** can be used for interior partitions, curtain wall and for load bearing steel framing jobs
- **Improved** thermal, fire and acoustic ratings
- **Sound tested** in 16 & 24" on center framing assemblies
- **Limiting heights tested** with excellent heights
- **UL listed** in over 40 different assemblies. StudRite 18 mil (minimum) is listed in multiple assemblies for 1, 2, 3 & 4 HR fire rated walls. Gypsum wallboard can be horizontal without joints aligned and backed or vertical.
- **Will not** swell, warp, burn, rot or support insect infestation or mold growth
- **Available in** 18 mil to 68 mil steel, so there is a product for every situation
- **G40, G60 or G90** prime galvanized steel
- **Great for panelized construction.** Lighter weight panels make it easier and faster to install. Precision manufacturing process designed for custom lengths and allows for any combination of solid sections and triangular knockouts needed for the job.
- **Can be used with** impact or abuse board



Visit www.marinoware.com or contact your local L&W Supply branch for additional product information and availability.

MARINO\WARE®

SIMPSON STRONG-TIE® RCKW Kneewall Connector

The Simpson Strong-Tie® RCKW connectors offer excellent overturning moment loads for kneewalls and parapets as well as interior partial-height walls. These connectors offer a unique anchor-hole pattern that permits anchorage to both concrete and structural steel, with the larger hole designed to accommodate 1/2"-diameter concrete screws such as the Simpson Strong-Tie® Titen HD®. The RCKWS is a heavy 171 mil (7 ga.) stiffener that nests onto the RCKW clip. The screw holes and anchor holes in the stiffener line up with those in the RCKW clip, making fastener and anchor installation a snap. The RCKW clip and RCKWS stiffener are sold separately.

Traditional attachments have consisted of a piece of structural tube steel fabricated with a plate welded on the bottom that requires 2 to 4 anchors to attach it down to the concrete. This is a custom part typically produced by a local structural steel fab shop and can be extremely expensive. The RCKW offers a cost-effective solution that only requires one 1/2" anchor to install. Less expensive clip + less holes to drill + less anchors = cost savings to the contractor.



Features & Benefits

- Precision-punched holes that are specifically sized for a #12 screw. This allows for minimum effort while drilling through a 7 ga. clip and still keeps the connection tight enough to support the heavy loads.
- Heavy 7 ga. construction provides on average the highest loads in the industry.
- Large-diameter anchor hole allows for a 1/2" anchor like Simpson's Titen HD heavy duty screw or our Strong-Bolt® 2 wedge anchor.
- Small-diameter anchor holes in the bottom leg provide an option for a screwed attachment to structural steel.
- Cost-effective solution vs. heavy custom structural steel tubes.



Compliance Data

- Testing performed in accordance with ICC-ES AC 261

For more information, visit www.strongtie.com or contact your local L&W Supply branch for additional product information and availability.

SIMPSON
Strong-Tie

SIMPSON STRONG-TIE® SUBH Bridging Connector

Simpson Strong-Tie® SUBH bridging connectors offer a simplified solution for bridging cold-formed steel studs. Its compact design fits industry standard stud knockouts for structural studs and is used in conjunction with standard 1-1/2" u-channel. The SUBH offers a single-screw solution for bridging, works with 3-5/8", 6", and 8" studs, easily handles off-layout studs, and can help increase bridging spacing requirements. All this adds to lower installed cost for the contractor.

Simpson SUBH bridging connectors are used to brace structural studs for curtain wall and axial load bearing applications. 1-1/2" u-channel is inserted into the stud knock out. The SUBH clip is then slipped into the knockout over the u-channel and fastened to the u-channel with 1 typical #10 self-tapping screw.

While the material cost of bridging in a CFS wall is minimal, it is a very labor-intensive process. The SUBH connector eliminates 3 screws per connection over common clip angle bridging, allows for off-layout studs, and can eliminate rows of bridging on taller walls in some cases. One size connector can also accommodate multiple stud sizes and gauges, which reduces confusion, and the number of SKUs and inventory in the field.



Features & Benefits

- Installed easily by one installer
- Many applications require only one screw
- Provides bridging solutions for web thicknesses from 20 -12ga. and 3-5/8" to 8" studs
- Allows for off-layout stud spacing
- May be able reduce the number of bridging runs in taller walls

Compliance Data

- Design values ensure compliance with AISI S100 sections D3.2.1 and D3.3 for axially and laterally loaded studs
- Code Approval: IAPMO UES ER-124 and City of Los Angeles RR25489

For more information, visit www.strongtie.com or contact your local L&W Supply branch for additional product information and availability.

SIMPSON
Strong-Tie

ClarkDietrich TRAKLOC® Drywall Framing System

TRAKLOC® Drywall Framing System from ClarkDietrich is an adjustable steel framing system that telescopes in length to deal with variances during installation.

Unlike traditional steel studs, which are cut to length for varying jobsite conditions, TRAKLOC® allows you to order one length member and “adjust” the length accordingly to make up for variances in the slab. The TRAKLOC® Stud and TRAKLOC® Track systems consist of a traditional-style framing member combined with an interlocking adjustable component. The adjustable portion allows for telescopic length adjustments and can accommodate variances in the slab, minor wall heights per floor, etc. The interlocking component of the stud and track eliminate the need for most connections.

TRAKLOC Steel Framing can be used for the framing of any interior non-load bearing walls, subject to compliance with the project specifications and design requirements. For rated walls, TRAKLOC is approved for one and two-hour FRT wall assemblies. TRAKLOC is manufactured in 2-1/2, 3-5/8, 4 and 6-inch web widths and steel thicknesses of 18, 24, 30 and 33 mil. See limiting height charts for allowable wall height data.

Features & Benefits

- **Faster Installation** – Twists and locks into place. Studs can be installed from the ground, greatly reducing time spent climbing ladders and scaffolding.
- **Non-Mechanical Attachment** – Installation of TRAKLOC is ICC-ES approved without the use of fasteners to attach the studs to the top or bottom track. ICC-ES Report # ESR-1464.
- **Increased Productivity** – Significant productivity gains are possible versus conventional stud and track framing-substantial installed cost savings!
- **Safety** – Safer Framing System™ reduces jobsite hazards. Less time spent climbing scaffolds, ladders, lifts and bending over to install screws result in fewer job related injuries and reduced workers’ compensation costs.
- **Less Waste** – Less cutting of studs significantly reduces material scrap and waste in addition to less noise, less steel shavings and improved air quality.
- **High Performance** – Allows for seismic and live-load vertical inter-floor deflection in the stud, not the track. This feature eliminates the need for deflection tracks in fire-rated head-of-wall assemblies in use with the deflection stud.
- **Easy Transport** – Elevator stud helps with difficult loading/stocking conditions and requires slotted MaxTrak® at the head-of-wall for vertical deflection.



Code Approvals

- 2012 International Building Code (IBC)
- 2010 California Building Code (CBC)
- AISI “North American Specification for the Design of Cold-Formed Steel Structural Members, AISI S-100-2007 with 2010 supplement”

Visit tools.clarkdietrich.com or contact your local branch for additional product information and availability.



GRABBER® PanelMax® CM10 Panel Fabrication Machine

The PanelMax® CM10 from Grabber Construction Products is the first mobile, self-driving milling machine in the US market. With the CM10 you can reduce material costs, increase speed and reduce finishing costs. Take your fabrication to the job!

Grabber's PanelMax® series has been specially developed for interior gypsum construction. Its application range is diverse and it is ideally suited for fast, clean and cost-saving fabrication of various materials, in particular in drywall construction projects. Reduce material cost and increase installation time with the CM10.

PanelMax® CM10 is portable and can be easily moved from job site to job site. You can be set up and begin fabricating corners in minutes. Use CM10 to mill and create perfect drywall corners.

Features & Benefits

- Milling & Sawing capability
- Laser alignment for accuracy
- Dust collection system to reduce jobsite debris
- Fast and easy set-up to increase productivity
- 1 year or 1000hr warranty
- Comes with a 1000 watt milling unit and one 90° bit

Product Information

Cutting length: Up to 10.8

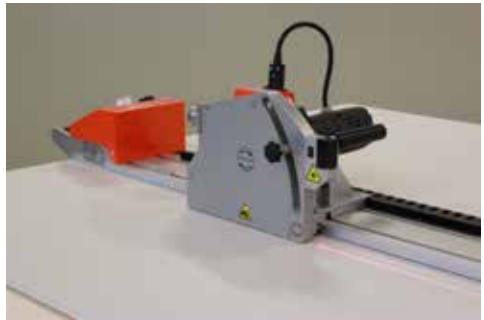
feet with an extension rail

Feed: Max. 26.3-ft/min, can be controlled

Cutting depth saw: Up to 1.3-in (optional)

Connected load: 120V, 50Hz

Output: Max. 1.3kW



For more information, visit grabberman.com or contact your local L&W Supply branch for additional product information and availability.



GRABBER® SuperDrive® N7 Automated Fastening System

The GRABBER® SuperDrive® N7 Automated Fastening System is ideal for metal framing and drywall attachment and is designed for fastener lengths from 3/4" to 2" and gauges 6 to 8.

Designed to fit the industry's top brands, the SuperDrive N7 easily transforms a standard DeWalt, Makita, or Grabber Rocker screw gun into a powerful dual-purpose tool. Contractors can switch to collated functionality in a matter of seconds and drive more screws faster and with greater accuracy. With the N7, a professional's favorite and familiar screw gun can help deliver quicker installations, lower costs, and greater profitability. Plus, reverting to single screw driving with the same tool is easy.

Features & Benefits

- **Versatile** – Snaps on to DeWalt and Makita drivers in seconds; no couplers or conversion required
- **Lightweight** – aluminum-body construction features a smaller head profile than competitive attachments so it can fit into tighter corners and spaces
- **Efficient** – 50 screws per strip means staying on task longer and fewer change outs compared to other systems
- **Easy** – Adjust for fastener length with a click of a button
- **Protects** – SureLock™ fine depth control adjustment and rounded nose piece won't damage drywall or other sheathing
- **SDN7M1** – works with Makita corded and cordless models: FS4200, FS4300, XSF03
- **SDN7D1** – works DeWalt and Rocker corded models: 4060, 4063, DW266, DW274K
- **SDN7D2** – works with DeWalt cordless models: DCF620M2 or DCF620D2

**Save Time & Money
with the GRABBER®
SuperDrive® N7
Automated Fastening
System**



For more information, visit grabberman.com or contact your local L&W Supply branch for additional product information and availability.



CertainTeed SilentFX® QuickCut™

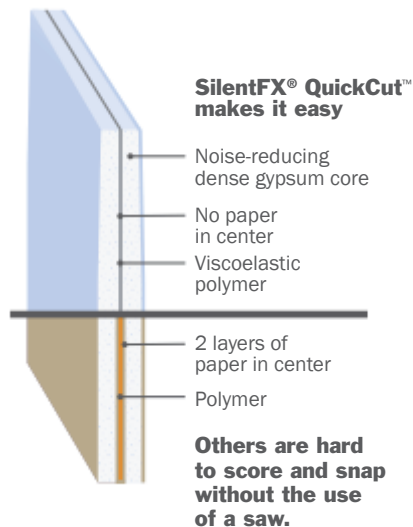
CertainTeed SilentFX® QuickCut™ Noise-Reducing Gypsum Board is specifically designed to reduce airborne sound transmission between two adjoining spaces when used in wall or floor/ceiling assemblies. SilentFX QuickCut features a viscoelastic polymer that dampens sound energy. Application of the viscoelastic polymer between two specially formulated dense gypsum cores results in a combination that significantly improves sound attenuation and is ideal for systems requiring high STC performance. Commercial acoustic systems featuring SilentFX QuickCut provide STC ratings of 50 and up.

In addition to providing exceptional acoustic performance, this functionally superior board is engineered to score and snap for faster installation and lower labor costs.

Clips and resilient channel can easily be short-circuited during the construction process and even afterwards, during picture hanging or pressing of heavy objects against the wall, negatively affecting acoustic performance.

Features & Benefits

- Engineered to score and snap for faster installation and lower labor costs
- Less material and less layers saves on construction time
- High STC ratings with fewer layers of gypsum board than traditional assemblies
- Less layers means more useable square footage in the space
- M2Tech technology provides additional zone of protection against moisture and mold
- Regular and Type X products available



Visit www.certainteed.com or contact your local L&W Supply branch for additional product information and availability.

CertainTeed
SAINT-GOBAIN

CertainTeed AirRenew® Indoor Air Quality Drywall

The AirRenew family of products is the only drywall that permanently removes formaldehyde from indoor air, improving air quality for up to 75 years.

Features & Benefits

- Permanently removes formaldehyde from the air
- Cuts and installs like standard drywall
- Continues to absorb formaldehyde after painting with water based acrylic (latex) paint or covered with breathable wallpaper.
- Can be recycled or landfilled if permitted locally, the same as standard gypsum board and is not harmful to humans or animals.
- GREENGUARD Gold certified.



Cleaner air is just a click away at AirRenew.com

AirRenew®
Essential



AirRenew Essential is a cost effective solution for applications where mold and moisture resistance is not required. It is available in 1/2" regular or 5/8" Type X resistant gypsum.

AirRenew®
M2TECH™



For added protection against moisture and mildew, choose CertainTeed's AirRenew M2Tech® IAQ drywall.

Visit www.certainteed.com or contact your local L&W Supply branch for additional product information and availability.

CertainTeed
SAINT-GOBAIN

Continental Building Products Rapid Deco® Level 5 Finishing System

Continental's Rapid Deco® Level 5 System is composed of factory-applied level 5 finish Bison Board™ drywall and a specially formulated joint compound. It installs the same as a Level 4 finish, but produces the results of a Level 5—without the need to hand- or spray-apply a skim coat.

Features & Benefits

- Reduces the time, materials, and labor required to achieve ASTM C 840 Level 5 specification
- Available with Mold Defense® protection
- GREENGUARD® certified
- Bison Board™ drywall is composed of 99% recycled content, contributing toward LEED® credits
- Meets Level 3 for abrasion resistance per ASTM C1629

RAPID DECO® DRYWALL offers the highest level of quality while saving countless hours of preparation and skim coating. It is available in the following types:

- Rapid Deco® Level 5 (1/2 in. thickness)
- Rapid Deco® Level 5 Type X (5/8 in. thickness)
- Rapid Deco® Level 5 with Mold Defense® (1/2 in. thickness)
- Rapid Deco® Level 5 Type X with Mold Defense® (5/8 in. thickness)

RAPID DECO® JOINT COMPOUND is specially formulated to match the skim coat of Rapid Deco drywall, providing a uniformly smooth surface across finished walls and ceilings. Rapid Deco can also be used as a standalone compound for all phases of the drywall finishing process.

Learn More

Visit Continental's YouTube channel and see a video showing how Rapid Deco saves time on the job.

https://youtu.be/iWBtY8rP_LY

YouTube.com (Search: Rapid Deco)

The Rapid Deco Level 5 System installs in the same number of steps as a Level 4 finish, but produces the results of a Level 5 — saving time, labor, and money.



HOW MUCH COULD YOU BE SAVING BY USING RAPID DECO?

Contact your local L&W Supply Team to complete the table and find out.

COST CALCULATOR*	HAND-APPLIED LEVEL 5	SPRAY-APPLIED LEVEL 5	RAPID DECO LEVEL 5
Drywall Materials			
Level 4 Installation	Same	Same	Same
Skim-Coat Materials			Unnecessary
Level 5 Skim/Sand Labor			Unnecessary
TOTAL COST**			

* Costs are calculated per square foot. ** Does not include cost of labor to hang drywall.

For more information, visit www.continentalbp.com or contact your local L&W Supply branch for additional product information and availability.



Johns Manville GoBoard®

GoBoard® is the ultra-lightweight tile backer board from Johns Manville. It's engineered for durability, yet is up to 80% lighter than cement boards. GoBoard is easy to handle and can be cut right where it's installed using a basic utility knife without crumbling or disintegrating. Best of all, it has waterproofing already built-in to save on time and labor.

Fast installation*

Complete shower tile projects in half the time or less

Ultra-lightweight

Up to 80% lighter than cement boards, yet engineered for durability

Easy to cut, handle & install

Simply attach with backer board screws or roofing nails

Waterproof built-in**

Seal only the board joints and fastener locations for a waterproof tile assembly per GoBoard installation instructions

GoBoard is available in these thicknesses:

- 1/4" for floors and countertops
- 1/2" and 5/8" for walls, showers, ceilings and floors
- 1", 1-1/2" and 2" for walls, benches, shelves, tub surrounds, vanities and countertops

**A typical shower project, waterproof installation, following manufacturer's installation instructions.*

***Only board joints and fastener locations require a waterproof sealant per GoBoard*



Visit www.jm.com or contact your local L&W Supply branch for product information and availability.

Johns Manville
A Berkshire Hathaway Company

MARLITE® BlueSky™ Advanced Finishing System

Sophisticated European technology combines with 85 years of Marlite expertise to provide game-changing digital and spray finishing for wall panels. Customers can select from over 200 images from Marlite's exclusive library featuring digital reproductions of woods, granite & marble, brick & stone, tile & mosaics, objects, organic materials, cement, metals, textiles, leather, abstracts, translucent materials, aged woods & lap siding and classic Marlite Finishes. Or customers can upload a photo, send us something to scan or select a solid color from among over 7,000 Sherwin-Williams colors.

The versatile BlueSky™ system applies world-class finishing to Fiberglass Reinforced Plastic (FRP), High Density Fiberboard (HDF), Medium Density Fiberboard (MDF), Expanded PVC, Acrylic and virtually anything flat. The finishing line is over two football fields in length and features a series of sanders, spray booths and curing ovens. The digital printer employs over 80,000 print nozzles, delivering the temperature controlled ink with unprecedented precision to create smooth gradients and sharp edges. The process uses water-based coatings, solvent-free inks (no VOC) and a low temperature UV curing process that uses less energy to produce an even more durable wall panel surface.

With the ability to print up to 600 dots per inch (DPI), BlueSky™ really shines when replicating high-end materials like exotic leather, Italian marble, rare woods, mosaic tile, etc. The look is similar, but when you consider the cost, there is no comparison. You have to see the vivid color, crisp resolution and stunning detail to fully appreciate it. So, BlueSky™ makes it easy to get high-quality samples in your hands.

BlueSky™ panels are installed using one of Marlite's pre-engineered, easy-to-install application systems – such as Artizan™ FRP, Symmetrix™ FRP, Envue™ FRP and Plank™ Panels. With the BlueSky™ Advanced Finishing System, Marlite makes it easy and affordable to put the world on a wall.



For more information, visit www.marlite.com or contact your local L&W Supply branch for additional product information and availability.



MARLITE® Symmetrix™ FRP

Symmetrix FRP Panels install directly over drywall, plywood, existing ceramic tile or even old FRP panels. They are ideal in dining rooms, fitness areas, kitchens, restrooms, merchandising displays and service counters. There are two excellent methods to sell Symmetrix FRP panels... First, more than 100 national “chain” accounts have specified Symmetrix in grocery, restaurant, convenience stores, drug stores, health care, education and hospitality industries. And even though L&W only has distribution rights in a dozen markets across the country, our Preferred Vendor Agreement allows L&W to sell from anywhere in our branch network to any chain account in the USA.

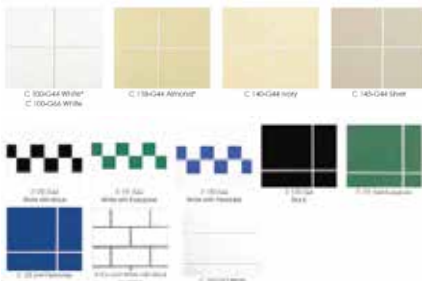
Beyond the chain accounts, Symmetrix can be sold to compete with ceramic tile applications on walls. It's important to know that material cost for Symmetrix is higher than ordinary ceramic tile on walls, but because there are so many variations of tile, Symmetrix can be a cheaper option in material cost alone. The more obvious and easily understood savings will come from the labor. Here's a typical scenario in new commercial/retail applications: Ceramic tile is a two man operation over three days... Day 1: set the ceramic tile. Day 2: grout the tile. Day 3: seal the grout. Since Symmetrix is an FRP Panel, it installs in hours not days using one or two laborers. In remodel applications, Symmetrix applied over existing tile can deliver double or even triple the installation cost savings versus replacing the old tile with new tile which requires the old tile to be tore-out and rebuilt.



Symmetrix™ FRP 75



Symmetrix™ FRP 71



Symmetrix™ FRP 70

For more information, visit www.marlite.com or contact your local L&W Supply branch for additional product information and availability.



eXP® Family of Glass Mat Products by National Gypsum

Defend Against Mold and More with Advanced Glass Mat Technology

Gold Bond® BRAND eXP is a technologically advanced glass mat gypsum product line utilizing Sealed Surface Technology. Part of our PURPLE® family, eXP offers a solution for most every design or building challenge you face. With more moisture and mold resistance, eXP will help you construct the finest quality walls. Our eXP PURPLE coated glass mat provides excellent weather and water resistance.

Extraordinarily sturdy, glass mat will stand up to the elements. Dimensionally stable under changes in temperature, eXP resists warping, rippling and buckling. When you build with our PURPLE eXP products, you will have a single-source solution that provides the performance, support and resources to get the job done right.



eXP Glass Mat Product Line:

- | | |
|--|--|
| <p>(1) eXP Interior Extreme® Gypsum Panel</p> <ul style="list-style-type: none">• For use in all rooms• Anywhere mold and moisture is a concern• 12-month exposure warranty <p>(2) eXP Interior Extreme® AR Gypsum Panel</p> <ul style="list-style-type: none">• Walls subject to added abuse/abrasion• Scratch and scuff resistant• 12-month exposure warranty <p>(3) eXP Interior Extreme® IR Gypsum Panel</p> <ul style="list-style-type: none">• Walls subject to impact from hard objects• Resists penetrations through the gypsum board• 12-month exposure warranty | <p>(4) eXP Shaftliner</p> <ul style="list-style-type: none">• For use in shafts and stairwells• Resists mold and moisture• 12-month exposure warranty <p>(5) eXP Tile Backer</p> <ul style="list-style-type: none">• Gypsum backer board for wet areas• Acrylic-coated facer• Eliminates need for water barrier <p>(6) eXP Sheathing</p> <ul style="list-style-type: none">• Accepts a variety of exterior finishes• Finishing of joints not required• 12-month exposure warranty |
|--|--|

For more information, visit purpleproducts.info or contact your local L&W Supply branch for additional product information and availability.

National
Gypsum®

ProForm® Brand Interior Finishing Products by National Gypsum
Finish Strong With The Right Products.

ProForm® BRAND Interior Finishing products provide the right ready mix or setting compounds to finish your complex projects. ProForm offers high-quality, consistent formulas that are easy to apply, saving you time and effort with superior bonding, excellent sanding characteristics, lightweight formulas, quick set times and select products that even offer added mold resistance or reduced airborne dust.



Choose The Best Products For Your Project

	Embed Tape	Fill or Trim Cornerbeads	Finish Joints	Spot Nails And Screws	Texture	Skim Coat	Sanding	In Mechanical Taping Tools
ProForm® Ultra Lite	✓	✓	✓	✓	✓	✓	✓	✓
ProForm® All Purpose	✓	✓	✓	✓	✓	✓	✓	✓
ProForm® XP® with Dust-Tech®	✓	✓	✓	✓	✓	✓	✓	✓
ProForm® Taping	✓	—	—	—	—	—	—	✓
ProForm® Multi-Use	✓	✓	✓	✓	✓	✓	✓	✓
ProForm® Lite Blue	✓	✓	✓	✓	✓	✓	✓	✓
ProForm® XP® Lite with Dust-Tech®	✓	✓	✓	✓	✓	✓	✓	✓
ProForm® Topping	—	✓	✓	✓	✓	✓	✓	✓
ProForm® Texture Grade	—	—	—	—	✓	—	—	—
ProForm® Quick Set™ Lite	✓	✓	✓	✓	—	—	✓	—

✓ Best ✓ Better ✓ Good — Not Recommended

For more information, visit proformfamily.info or contact your local L&W Supply branch for additional product information and availability.

National Gypsum®

SoundBreak® XP® Gypsum Board by National Gypsum

Turn down the volume when you incorporate Gold Bond® BRAND SoundBreak XP Gypsum Board into your wall assemblies. You will dramatically reduce sound transmission between rooms or dwelling units with this superior sound-damping gypsum board. SoundBreak XP has an acoustically enhanced, high-density gypsum core encased in heavy, abrasion and moisture, mold and mildew resistant, 100% recycled PURPLE® paper on both sides. Plus, SoundBreak XP provides the same great mold-inhibiting qualities as XP gypsum Board.



Features & Benefits

Reduces Sound Transmission

- Has a layer of viscoelastic damping polymer sandwiched between two pieces of high-density, mold-resistant gypsum board.
- Provides high-rated Sound Class Transmission (STC) values per an independent third-party acoustical laboratory using ASTM E90 test procedures.

Works For Interior Projects

- Use in a single layer or as a component of multi-layer wall assemblies.
- Thinner than traditionally built high-STC wall partitions, increasing usable floor space.
- Available in 1/2" and 5/8" (5/8" features a fire-resistant Type X core and is UL Classified).
- Provides greater resistance to surface abuse and indentation than standard gypsum board (per ASTM C1629).

Installs Fast and Easy

- Installs like traditional gypsum board, without requiring additional clips and/or channels.
- Finishes and decorates as easily as standard gypsum board.
- Can cut by scoring deeply from both sides before snapping or by using a hand/power saw.

Inhibits Mold Growth

- Helps inhibit mold growth with the highest possible score on mold tests (ASTM D3273 and ASTM G21).
- Features Sporgard™ technology with extra mold-inhibiting properties.
- Has less than 5% water absorption per ASTM C473.

Resists Moisture Better

- Fights the effects of moisture before damage can occur.
- Helps to reinforce the structure's integrity and strength.
- Reduces or eliminates swelling or dimensional movement caused by moisture.

For more information, visit soundbreakxp.info or contact your local L&W Supply branch for additional product information and availability.

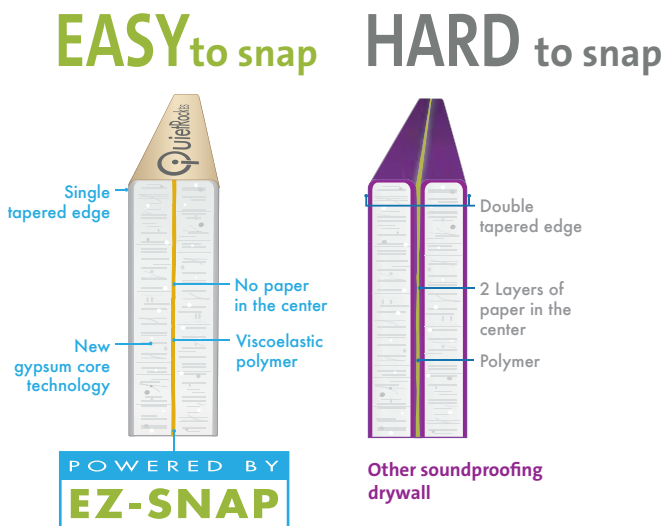
National
Gypsum®

QuietRock® ES

Quietrock ES makes building for noise control easy and straightforward. Utilizing the EZ-SNAP technology, QuietRock ES eliminates the use of paper and metal in the core, yielding faster and more reliable soundproofing installation. Unlike traditional sound methods like resilient channel, it cannot be easily short-circuited in the field, providing exceptional acoustic performance at a lower overall cost. It hangs and finishes just like standard drywall—no saw, same screws, same tools and no additional training needed. To prevent noise leaks and maximize acoustic performance, use QuietSeal® Pro around the perimeter of the wall and apply QuietPutty® to penetrations such as electrical switches and outlets. All acoustically rated assemblies must be airtight for the most reliable soundproofing results.

Features & Benefits

- Powered by EZ-SNAP for true score and snap
- Easier to score and snap compared to other acoustic drywall brands
- Only 5/8" thick providing more livable floor space vs. soundboard or RC-1
- Excellent application for curved walls—bending radius equivalent to 3/8" gypsum
- Outperforms multiple layers of drywall
- Abrasion-resistant paper
- Lab tested up to STC 60
- Load bearing, type X, 1 hour, fire rated



For more information, visit www.quietrock.com or contact your local branch for additional product information and availability.

QuietRock®

THE NEXT BIG THING IN WALLBOARD.

USG Sheetrock® Brand EcoSmart Panels

Representing a revolution in wallboard manufacturing, USG Sheetrock® Brand EcoSmart Panels offer contractors even greater benefits – up to 30% less weight without any sacrifice to performance.

But USG Sheetrock® Brand EcoSmart Panels go a step further by using significantly less water and energy to manufacture, helping meet the architectural community's desire for products with a lower carbon footprint.

Available for both fire- and non-fire-rated assemblies, contractors can realize the full benefits of USG lightweight technology for most project applications.



- USG Sheetrock® Brand EcoSmart Panels Firecode® X
- USG Sheetrock® Brand EcoSmart Panels Firecode 30°

© 2017 USG Corporation and/or its affiliates. All rights reserved.

The trademarks USG, FIRECODE, FIRECODE 30, SHEETROCK, IT'S YOUR WORLD. BUILD IT®, the USG logo, the design elements and colors, and related marks are trademarks of USG Corporation or its affiliates.

For more information, visit usg.com/eco or contact your local L&W Supply branch for additional product information and availability.

USG
IT'S YOUR WORLD. BUILD IT.®

USG HAS YOU COVERED INSIDE AND OUT.

Protect your work with USG glass-mat panels.

At USG, we have a long history of delivering innovative products to the market. That's why USG now offers a complete portfolio of glass-mat panels. Each panel is built to achieve the highest level of moisture and mold resistance available. For warranted weather protection, choose USG Sheetrock®, Securock® and Durock® Brand glass-mat panels.



USG GLASS-MAT PANELS CROSS REFERENCE

		USG	Georgia-Pacific
MOLD- RESISTANT PANELS	1/2" Glass-Mat Interior Panels	USG Sheetrock® Brand Glass-Mat Panels Mold Tough®	DensArmor Plus® Interior Panel
	5/8" Glass-Mat Interior Panels (Type X)	USG Sheetrock® Brand Glass-Mat Panels Mold Tough® Firecode® X	DensArmor Plus® Fireguard® Interior Panel
ABUSE- RESISTANT PANELS	5/8" Glass-Mat AR Panels (Type X)	USG Sheetrock® Brand Glass-Mat Panels Mold Tough® AR Firecode® X	DensArmor Plus® Abuse-Resistant Interior Panel
	5/8" Glass-Mat VHI Panels (Type X)	USG Sheetrock® Brand Glass-Mat Panels Mold Tough® VHI Firecode® X	DensArmor Plus® Impact-Resistant Interior Panel
LINER PANELS	1" Glass-Mat Shaftwall Liner Panels (Type X)	USG Sheetrock® Brand Glass-Mat Liner Panels Mold Tough®	DensGlass® Shaftliner
TILE BACKERBOARD	1/2" Glass-Mat Tile Backer	USG Durock™ Brand Glass-Mat Tile Backerboard	DensShield® Tile Backer
	5/8" Glass-Mat Tile Backer (Type X)	USG Durock™ Brand Glass-Mat Tile Backerboard¹	DensShield® Tile Backer
EXTERIOR SHEATHING PANELS	1/2" Glass-Mat Sheathing	USG Securock® Brand Glass-Mat Sheathing	DensGlass® Sheathing
	5/8" Glass-Mat Sheathing (Type X)	USG Securock® Brand Glass-Mat Sheathing Firecode® X	DensGlass® Fireguard® Sheathing
	1/2" Lightweight Glass-Mat Sheathing	USG Securock® Brand UltraLight Glass-Mat Sheathing	None
	5/8" Lightweight Glass-Mat Sheathing (Type X)	USG Securock® Brand UltraLight Glass-Mat Sheathing Firecode® X	None

© 2017 USG Corporation and/or its affiliates. All rights reserved. The trademarks USG, DUROCK, SECUROCK, SHEETROCK, the USG logo, the design elements and colors, and related marks are trademarks of USG Corporation or its affiliates. GREENGUARD Certified products are certified to GREENGUARD standards for low chemical emissions into indoor air during product usage. For more information, visit ul.com/gg.

For more information, visit usg.com/glass-mat or contact your local L&W Supply branch for additional product information and availability.

USG
IT'S YOUR WORLD. BUILD IT.®

TWO TRUSTED BRANDS. TWO PROVEN TECHNOLOGIES. ONE PREDICTABLE OUTCOME.

Comprised of USG Securock® Glass-Mat Sheathing with a factory-applied Tremco® air and water membrane, the Securock® ExoAir® 430 System is an innovative barrier technology that delivers built in control, confidence and performance from installation through the entire life-cycle of the building.



- Pre-applied air barrier membrane—install sheathing and air barrier at the same time
- Controls the unpredictable—time and materials
- Continuity with a direct connection of sealant to membrane
- Minimizes field applied challenges and makes installation more efficient
- Minimizes weather impact—no membrane cure time or wash out
- Suitable substrate for a variety of facades including adhesively applied EIFS
- Trained/approved installers

UL Certified
PEI Verified
NFPA 285 Compliant
ABAA Approved



© 2017 USG Corporation and Tremco Incorporated. All rights reserved. The trademarks USG, SECUROCK, the USG logo, the design elements and colors, and related marks are trademarks of USG Corporation or its affiliates. The trademarks ExoAir and Tremco are trademarks of Tremco Incorporated. GREENGUARD Certified products are certified to GREENGUARD standards for low chemical emissions into indoor air during product usage. For more information, visit ul.com/gg.

For more information, visit securockexoair.com or contact your local L&W Supply branch for additional product information and availability.

USG **TREMCO**
PERFORMANCE BUILT IN™

WHEN IT COMES TO BUILDING YOUR WORLD, USG HAS YOUR WALLS COVERED.

Choose USG Sheetrock® and Beadex® Brands for all your finishing needs.

At USG, we offer regional formulations specifically designed to perform in a variety of environments and climates. So no matter where you are, you can trust that USG has your project covered from start to finish.



- Joint Compounds
- Corner Beads and Trim
- Plasters
- Joint Tapes
- Textures
- Primers and Surfacer
- Sealants



© 2017 USG Corporation and/or its affiliates. All rights reserved. The trademarks USG, BEADEX, SHEETROCK, the USG logo, the design elements and colors, and related marks are trademarks of USG Corporation or its affiliates. GREENGUARD Certified products are certified to GREENGUARD standards for low chemical emissions into indoor air during product usage. For more information, visit ul.com/gg.

For more information, visit usg.com or contact your local L&W Supply branch for additional product information and availability.

USG
IT'S YOUR WORLD. BUILD IT®

Exteriors

Across the country, many L&W Supply locations carry a full line of stucco, EIFS, and air/water barrier systems. In addition to full line offerings, L&W Supply EIFS specialists have the technical know-how to get your project done right.

STUCCO L&W Supply branches carry a variety of brands and products to meet your needs. Bagged pre-mixed stucco specially blended for your area, taking into account local temperatures and humidity. We also carry lime, cement, and sand at many of our locations.

LATH Metal lath is available in a variety of weights and coatings, with 2.5 and 3.4 the most commonly stocked. We offer a variety of lath products, from High rib to paper backed lath to Stucco netting. We also have all the code compliant beads and trims needed for any stucco or plaster job.

EIFS The original continuous insulation system (CI). CI is required by building code in most commercial buildings and jurisdictions. L&W has been providing CI solutions to our customers for over 25 years.

Energy Standard for Buildings Except for Low-Rise Residential Buildings, The most recent update to ASHRAE 90.1 is the standard on which the 2012 version of the *International Energy Conservation Code* (IECC) is based. *The International Energy Conservation Code* (IECC) establishes the requirements for building design, materials, and performance related to energy efficiency.

L&W Supply sets the standard for many of the largest EIFS Manufacturers and applicators. Our EIFS stocking locations can color match and tint ON SITE. No more waiting weeks for a color match. We have foam, mesh, and the technical expertise to help you get the EIFS done right!

Products and systems vary by location.



Call or visit your local L&W Supply location for help selecting a color or getting specifications for your next exterior project.
www.lwsupply.com

L&W Supply Nationwide Locations:

Each of our locations is your local source for outstanding products and superior customer service.

**ACOUSTICAL &
DRYWALL SUPPLY**

M & S
DRYWALL SUPPLY

IDS
indianapolis
drywall supply company


Capitol Drywall Supply


Great Lakes
Gypsum
& Supply

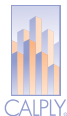
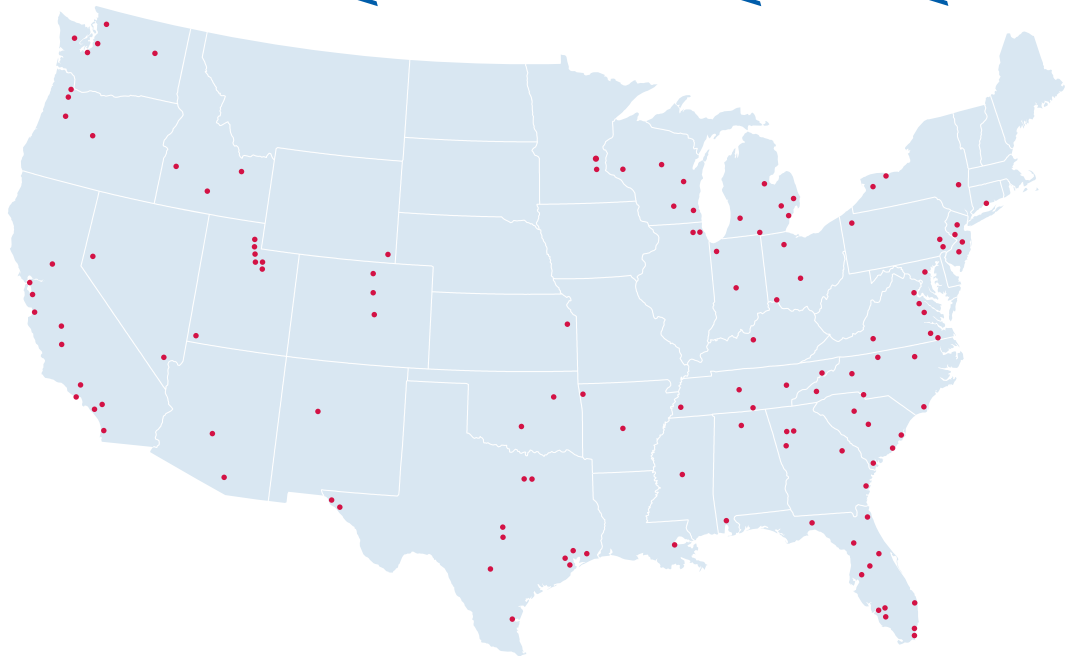
ARROWHEAD
drywall supplies


Building
Specialties

EC drywall supply


Barnett
Drywall
Supply


River City
Materials



**ACOUSTICAL
MATERIAL
SUPPLY INC.**


Alabama
Drywall
Supply

 **WISCONSIN
DRYWALL**


all-interior supply

Find a branch at lwsupply.com

**For more information go to
lwsupply.com**